

# Gallery



The gallery is located in the Walter Reid Cultural Centre, a diverse, multi purpose site, situated right in the heart of Rockhampton.

## LOCATION:

Walter Reid Cultural Centre, cnr East Street and Derby Street, is only a short walk from the CBD and minutes from the airport and the beautiful Fitzroy River precinct.

## TYPE OF VENUE:

Air-conditioned exhibition space with hanging rail around all walls at 3m from floor

## IDEALLY SUITED FOR:

Small art exhibitions, small trade shows, conference breakout room.

## AREA / FLOORSPACE:

Approx 120m<sup>2</sup>.

## KEY FEATURES:

- Air conditioning
- 5m ceiling height
- Wheelchair accessible
- Building access via Derby Street
- Toilet facilities located within building
- Short term on-street parking outside, long term parking on river bank car park
- Power – 14 x twin 10 amp outlets
- Kitchenette with small fridge and kettle
- Picture rail at 3m height around room + hanging wires
- Plinths available for use during exhibitions
- Ticketing available upon request
- Comes with 2 tables and 10 chairs
- Kiosk facilities and servery available upon request

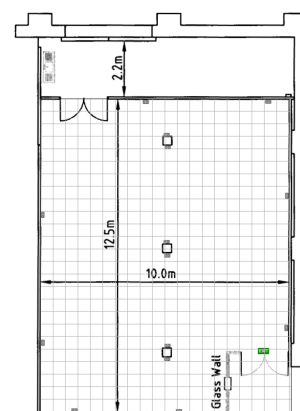
## EXTRAS

Additional tables and chairs, sound, lighting, audio-visual and other equipment available for hire through our office

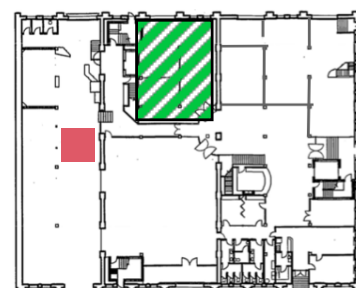
## RATES:

Rockhampton Regional Council adopted fees and charges will apply

## Floor Plan



Walter Reid Cultural Centre



GROUND FLOOR LEVEL  
LOCATION PLAN

Current as at November 2018

PO Box 1860 Rockhampton QLD 4700 T. 07-49245600

E. [venuehire@rrc.qld.gov.au](mailto:venuehire@rrc.qld.gov.au)

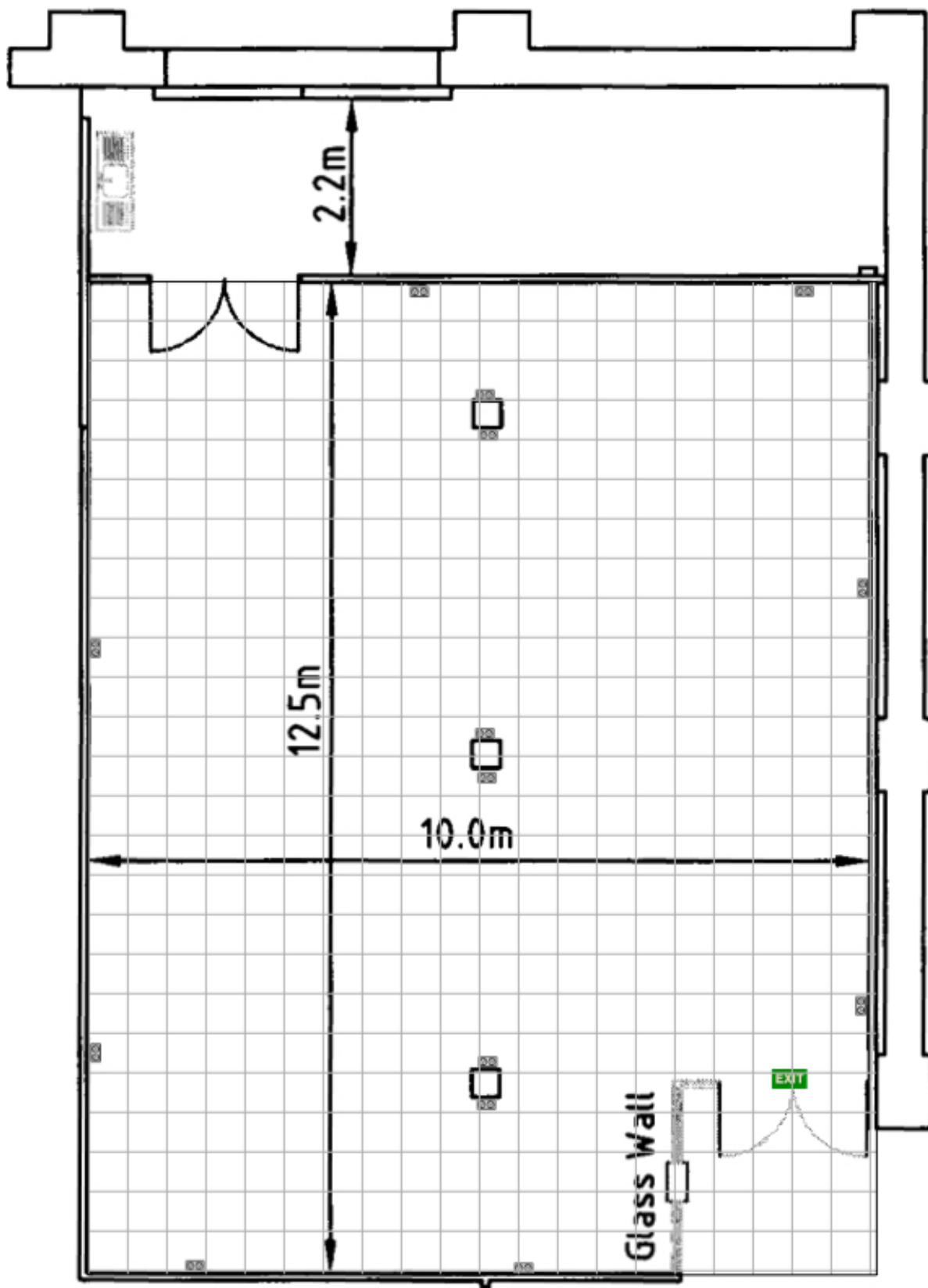
Walter Reid Cultural Centre is owned and operated by Rockhampton Regional council

[www.seeitlive.com.au](http://www.seeitlive.com.au)

**Rockhampton**  
Regional Council

# Gallery

Floor Plan (0.5m squares)



PO Box 1860 Rockhampton QLD 4700 T. 07-49245600

E. [venuehire@rrc.qld.gov.au](mailto:venuehire@rrc.qld.gov.au)

Walter Reid Cultural Centre is owned and operated by Rockhampton Regional council

[www.seeitlive.com.au](http://www.seeitlive.com.au)