

spotlight

EVENT GUIDE



FEATURE EVENT

MORNING MELODIES: LIVE AT FRANKIE'S
22 JUNE 2026

SEEITLIVE.COM.AU



BUYING TICKETS

The Pilbeam Theatre is located on the corner of Victoria Parade and Cambridge Street, Rockhampton.

You can buy tickets in the following ways:

At the Pilbeam Theatre Box Office | Victoria Parade entrance

By Phone | on 4927 4111

Online | www.seeitlive.com.au

FRIENDS OF THE THEATRE

If you enjoy the theatre, why not become a Friend of the Theatre?

Friends of the Theatre is an organisation where members volunteer to work in various aspects of the theatre such as ushering, bar, candy bar and program selling. Friends receive discounts to many of the shows listed in Spotlight, and also receive a newsletter mailed direct to them.

Each time a Friend of the Theatre works they receive a Performance Work Voucher, which is exchanged for tickets to events. Unlimited seats are available in exchange for Performance Work Vouchers on events in Spotlight bearing the blue star symbol. For other events, voucher seats are limited to a total of six seats per performance. Further details as well as membership forms are available from the Box Office.

GENERAL INFORMATION

Theatre programs start promptly at the advertised start time and latecomers will not be admitted until a suitable break in the performance. Smoking is not allowed in any part of the Pilbeam Theatre or other Council venues.

The use of cameras and recording devices during performances is illegal and penalties for infringement of copyright in this way are severe. Please ensure all mobile phones are switched off before entering the auditorium. Crying or fidgety children can be a distraction to other theatregoers and performers, so if you bring your small child to the theatre, please book an aisle seat in case you need to exit the auditorium.

TICKETING ABBREVIATIONS

A: Adult	S: Student (Tertiary)	T: Teacher
ADM: Admission	FoT: Friend of Theatre	(School Group)
C: Concession	G10+: Group of 10 or more	SS: School Student
P: Pensioner	J: Junior *	(School Group)
SC: Senior's Card	F: Family	

*Preschool and school age, 3 yrs to 17 yrs. May have additional age restrictions. Please check with the Box Office to confirm eligibility for a particular price category.

ROCKHAMPTON EISTEDDFOD

WHERE

PILBEAM THEATRE &
WALTER REID CULTURAL
CENTRE

WHEN

TUE 5 - SUN 24 MAY

COST

SEE WEBSITE FOR DETAILS



Established in 1923, the Rockhampton Eisteddfod is a volunteer-led celebration of the performing arts that unites our community each year.

Showcasing dancers, musicians and speech performers from across the region, it nurtures confidence, creativity and connection in young people. We warmly invite the community to attend, celebrate and support the remarkable local talent that continues to shape Rockhampton's vibrant cultural future.

For more details, visit: rockhamptoneisteddfod.org.au

Tickets to Pilbeam Theatre sections on sale from: www.seeitlive.com.au

REID'S GALLERY AND GIFT SHOP

WHERE

WALTER REID CULTURAL
CENTRE (CORNER EAST
AND DERBY STREETS)

WHEN

TUE 5 - SAT 30 MAY
OPEN 6 DAYS A WEEK,
10AM TO 3PM. EXCLUDING
PUBLIC HOLIDAYS.



Attention all Rockhampton and district discerning buyers!

You once again have the opportunity to purchase beautiful handmade gifts for the special people in your lives. All items created by members of the arts groups in the Walter Reid Cultural Centre.

ARTISANS OF CQ

WHERE

ROBERT SCHWARTEN
PAVILION ROCKHAMPTON
SHOWGROUNDS

WHEN

SAT 9 MAY
8AM - 1PM

COST

FREE ENTRY



An exclusively Handmade Market where Artisans of Central Queensland can showcase and sell their creations.

Held indoors with live music, coffee and cakes, hot food and plenty of seating for your comfort. Come and support your local Makers, Bakers and Growers!

For more details, visit: www.artisansofcq.com.au

LUKE KIDGELL - GOOD INTENTIONS



WHERE PILBEAM THEATRE
WHEN FRI 15 MAY, 7:30PM
COST PREMIUM \$60
ADM \$55

Luke Kidgell continues his new World Tour in Australia in 2026!

Luke is known for his viral crowd-work interactions that often lead to some fairly unusual, yet hilarious encounters. Despite not having much control over his impulsive thoughts, Luke insists that deep down he means well, and this year he's on a mission to prove it. After touring the US, Canada, NZ & Europe Luke is coming back home with his brand-new show Good Intentions. This is not one to miss! You've seen him on the internet, now it's time to see him in real life, as Luke tries to prove that he really does have Good Intentions.

16+. Under 18 must be accompanied by a parent or guardian.

LIFELINE BOOKFEST



WHERE ROBERT SCHWARTEN PAVILION, ROCKHAMPTON SHOWGROUNDS
WHEN FRI 15 - SAT 16 MAY
8:30AM - 4:00PM
COST FREE ENTRY

Bring your friends and family to the Lifeline Bookfest and lose yourself in preloved books, books and more books!

Hundreds of titles and a vast array of mystery, fantasy, humour, crime, romance, paperback, fiction, nonfiction and children's favourites. Also tables of clothing for all the family for \$2 an item (summer and winter).

2026 See It Live Theatre Season

We have a great lineup of shows in our 2026 See It Live Theatre Season.

3 June Water Mirror
26 June Melbourne Comedy Festival Roadshow
26 Aug Horizon
21-23 Sep Flipside Circus Workshops
26-27 Sep The Librarian
30 Sep Calamity Jane



CREEDENCE CLEARWATER COLLECTIVE

WHERE PILBEAM THEATRE

WHEN SAT 16 MAY, 7:30PM

COST A \$69, C \$64, J \$49,
G 6+ A \$59 EA



Celebrate the music of Creedence Clearwater Revival and John Fogerty, as we present the music of one of the world's most iconic bands

From the songs they wrote, to the songs covered, to the songs they wrote for others. All the hits that defined a generation, and have become the soundtrack for many more – all in one night, live, on stage. Creedence Clearwater Collective brings to the stage a band that captures the unique CCR sound. You do not want to hear through the grapevine that you missed out on this howling good time. Join us, a real-life travelling band.

THE WIGGLES – BIG LITTLE SHOW

WHERE PILBEAM THEATRE

WHEN WED 20 MAY
10:00AM, 12:30PM & 2:30PM

COST ADULT \$44.50
CHILDREN (1-17 YEARS)
\$44.50



This show has all the colour, music and magic of a Wiggles arena show – delivered in a closer, more personal live setting.

A joyful live experience designed especially for families who want to get closer than ever to their Wiggle friends. Starring Anthony, Lachy, Caterina and Evie Wiggle, alongside everyone's favourite Dinosaur, Dorothy the Dinosaur, Wags the Dog, Henry the Octopus, Captain Feathersword, Buddy and don't forget the Tree of Wisdom! Expect 55 minutes of pure Wiggly fun, featuring all the classic songs that generations of families adore, plenty of audience interaction, dancing in the aisles, and unforgettable moments for little ones and grown-ups alike.

review us

Attended one of our events and loved it?
Leave us a review on TripAdvisor!



ECHOES OF PINK FLOYD



WHERE PILBEAM THEATRE
WHEN THURS 28 MAY, 8PM
COST A \$82, C \$77, G 8+ A \$77,
J (2-17 YEARS) \$51

Join Echoes of Pink Floyd as they pay tribute to one of the greatest bands of all time and celebrate 60 years of Pink Floyd's enduring legacy.

Iconic British rock band, Pink Floyd left an indelible mark on the world, inspiring generations with their ground-breaking soundscapes and thought-provoking lyrics. Pink Floyd's illustrious career will be celebrated in grand style in a brand-new concert production by Australia's own Echoes of Pink Floyd. Echoes of Pink Floyd will take audiences on a mesmerising journey through six decades of Pink Floyd's unparalleled musical legacy. From the psychedelic sounds of the 1960s to the progressive rock masterpieces and stadium-shaking anthems of their later years, this show will capture the true essence of Pink Floyd's evolution with precision and passion.

THE BIG CHILL OUT



WHERE PILBEAM THEATRE
WHEN FRI 29 MAY, 7:30PM
COST A \$79.90, C \$74.90,
J 3-17 YRS \$49.90,
S \$64.90, G 6+ \$69.90 EA

The Big Chillout: Celebrating The Soundtrack That Saved Motown.

Get ready to relive the music that defined a generation in The Big Chillout, a joyous, soul-stirring celebration of the legendary Big Chill soundtrack and the Motown revival it sparked. This powerful live show brings to life the timeless classics of Marvin Gaye, The Temptations, The Rolling Stones, Aretha Franklin, Creedence Clearwater Revival, Smokey Robinson, Spencer Davis Group, The Band, Procol Harum, and many more — performed by a world-class band and presented as an entertaining narrated show fronted by two powerhouse vocalists.

join our email list

Keep up to date about what's coming up at the Pilbeam Theatre by joining our E-List! You'll receive emails about shows going on sale and special presale offers. It's free and you can unsubscribe any time you like. For more details, visit

www.secitlive.com.au/Elist

DOLLY: I WILL ALWAYS LOVE YOU

WHERE PILBEAM THEATRE
WHEN SAT 30 MAY, 7:30PM
COST A \$74.60, C \$69.60,
G 10+ A \$69.60 EA



Get ready to experience the ultimate tribute to country music royalty!

Dolly: I Will Always Love You is a spectacular celebration of the one and only Dolly Parton! Brooke McMullen masterfully captures the essence of Dolly, delivering powerhouse vocals, stunning costumes, and a captivating stage presence. This high-energy show takes you on a musical journey through Dolly's greatest hits, including Jolene, 9 to 5, Coat of Many Colors, Here You Come Again and so many more. Backed by a talented live band, Brooke's performance is a fitting tribute to a country music legend. Join us for an unforgettable evening of music, sparkle, and country charm.

WATER MIRROR

WHERE PILBEAM THEATRE
WHEN WED 3 JUNE, 7:30PM
COST \$50, G 4+ \$45EA, FOT \$45
SCHOOL GROUP DISCOUNTS
AVAILABLE



A stunning explosion of percussion, dance, and visual beauty! Water Mirror is a breathtaking fusion of Taiko percussion, dance, acrobatics, and cutting-edge projection and lighting design.

Created by Paulina Quinteros, this exhilarating production invites audiences of all ages to embark on a captivating journey that transcends traditional performance. The powerful rhythms of Taiko, led by a group of extraordinary percussionists, resonate throughout the venue, captivating audiences with Danza del Arte's athletic acrobatic dancers. The interplay between musicians and performers is both sublime and finely crafted. A remarkable and unforgettable performance. Presented by Rockhampton Regional Council.



find us on facebook

Keep up to date with what is happening at the Pilbeam Theatre, see sneak peeks, previews, behind the scenes video of upcoming events and more at our Facebook page.

www.facebook.com/pilbeamtheatre

MICHAEL JACKSON HISTORY



WHERE

PILBEAM THEATRE

WHEN

FRI 5 JUNE, 8:00PM

COST

A \$69, C \$62.10, J (3-13)
\$50, G6+ A \$62.10

Don't miss your chance to see Showtime's **The Michael Jackson HIStory Show** – returning to Australia in 2026 to commemorate 30 years since Michael Jackson's final, ground-breaking world tour: **HISTORY**.

Celebrate Jackson's creative genius and unsurpassed talent with riveting live performances covering his early days as a member of the Jackson 5, his groundbreaking theatrics in the 80s and his continued domination of Pop culture into the 21st century.

See the famous music videos come to life, and hear all the hits performed live, including Thriller, Billie Jean, Smooth Criminal, Bad, Beat It, ABC, Don't Stop Til You Get Enough, Human Nature, PYT, They Don't Really Care About Us and many more.

ABBA THANK YOU FOR THE MUSIC



WHERE

PILBEAM THEATRE

WHEN

SAT 6 JUNE, 7:30PM

COST

A \$79, C \$74, J 3-17 \$55,
G 6+ \$74 EACH

Get ready to say, "Thank you for the Music". This 2-hour spectacular live concert will take you through the songs, the life and magic that made **ABBA** one of the most successful bands of all time

All the hits Waterloo, Mamma Mia, Dancing Queen, Money Money, SOS, Ring Ring and the list goes on. ABBA Thank you for the the Music is a must see show! Performed by Narelle Ryan, Michelle Birmingham and full backing band.

friends of theatre

If you enjoy the theatre, then why not become a member of Friends of the Theatre?

Friends of the Theatre is a group of people who want to be part of the exciting world of live theatre. Friends lend a hand by volunteering to work in the bar, candy bar, program selling and ushering areas. But it's not all work and no play. Friends who volunteer to work also receive vouchers which can be redeemed for tickets to shows (depending on availability).

For more information, contact the Pilbeam Theatre Box Office on 4927 4111 or visit www.seeitlive.com.au

SEVEN DRUNKEN NIGHTS

WHERE PILBEAM THEATRE
WHEN SUN 7 JUNE, 5:00PM
COST A \$89.90, FOT \$81.90,
J (3-17)\$42.90



Proudly celebrating its incredible 10th Anniversary, Seven Drunken Nights - The Dubliners' Songbook returns to Australia for 2026!

Performed by a phenomenal cast of Irish musicians, the show is packed full of classics like Whiskey in the Jar, The Irish Rover and Rocky Road to Dublin - guaranteed to get your toes tapping as they bring the joy of this much-loved Irish folk band back to the stage. This ultimate feel-good production celebrates the musical mastery of The Dubliners, Ireland's favourite sons, in association with the legendary O'Donoghue's pub. With breathtaking performances and authentic Irish spirit, the show spans over 50 years, commemorating the music of The Dubliners and celebrating the band that influenced many generations.

SWEET CAROLINE NEIL DIAMOND TRIBUTE

WHERE PILBEAM THEATRE
WHEN MON 8 JUNE, 7:30PM
COST A \$74.65, C \$64.65,
G 6+ \$64.65



Neil Diamond is the consummate American singer-songwriter whose deep, resounding voice and timeless tunes have made him one of the world's most loved and lauded artists.

Now comes The Sweet Caroline Tour: A Tribute to Neil Diamond, putting all those well-loved classics back on stage and in the spotlight, showcased by a world-class international band and produced especially for the theatre. Take a step back into the glory days of music and musicianship with this beautiful tribute concert, featuring Sweet Caroline, Cherry Cherry, Red Red Wine, Crunchy Granola Suite, Shilo, Cracklin' Rosie, You Don't Bring Me Flowers, Both Sides Now, Heartlight, Forever In Blue Jeans, Song Sung Blue, Brother Love's Travelling Salvation Show, I Am... I Said, Girl You'll Be a Woman Soon and more.

For more information about events on sale at the Pilbeam Theatre Box Office visit our website or phone us on 4927 4111

www.secitlive.com.au



THE UNDERSTUDY



WHERE PILBEAM THEATRE
WHEN TUE 9 JUNE, 2:30PM
COST ADM \$99

The Understudy is a deep dive into the part of Australian touring life audiences never got to see, the musician who held the whole show together when the spotlight wasn't on him.

Michael "China" Walker spent decades as the quiet backbone of John Paul Young and The AllStar Band, the multi-instrumentalist who could step into any role at a moment's notice. Keys, guitar, bass, drums, vocals — whatever kept the night alive, China delivered it.

A standout feature of the show is its use of hologram technology, in some spots, allowing audiences to watch China perform multiple instruments at once, and in other spots, bringing back lost friends to play with the band. The holograms fade - he's joined by the AllStar Band - 3 OG's plus guys from Stylus, TMG and Tommy Emmanuel's band - and the room transforms into a high-energy celebration of the music, the mayhem, and the magic of Australian touring life. It's a tribute to the unsung hero — the understudy who kept the show rolling, night after night.

MASTERS OF POP



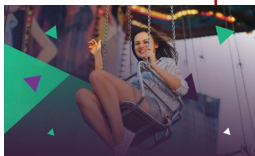
WHERE PILBEAM THEATRE
WHEN TUE 9 JUNE, 8:00PM
COST ADM \$99

A hit-packed night for the Countdown generation — the songs you grew up with, the choruses you'll sing without thinking, and the feeling of being right back there again.

Masters of Pop brings Australia's 70s pop era back to life with an all-star band of the original hit makers that made the hits — the ones you hear on radio every day. Between songs you'll get road stories that add colour — the "you had to be there" moments. It's the perfect balance of music and story: enough to make you smile, never enough to slow the party. Shared memories - let us take you back to being 15 again when everything was less complicated. Our soundtrack — Your soundtrack — The Soundtrack of our lives.

ROCKHAMPTON AGRICULTURAL SHOW

- WHERE** ROCKHAMPTON
SHOWGROUNDS
- WHEN** THURS 11 TO FRI 12 JUNE
(11 JUNE PUBLIC HOLIDAY)
- COST** SEE WEBSITE DETAILS



Whether you like sideshows and showbags, dagwood dogs and daring stunts, crafty competitions, or rides and wriggly reptiles the Rocky Ag Show has something for everyone at the Rockhampton Showgrounds!

For more details, visit: www.rockyshow.com.au

R' TON GRAMMAR SCHOOL MUSIC FESTIVAL

- WHERE** PILBEAM THEATRE
- WHEN** SAT 13 JUNE
- COST** ON SALE SOON



Experience the incredible musical talents of The Rockhampton Grammar School students, from Prep to Year 12!

Enjoy an unforgettable evening of entertainment featuring vibrant vocal and signing choirs, dynamic instrumental ensembles, and captivating solo performances. From classical masterpieces to modern hits, this festival celebrates the passion and dedication of our young musicians.

Don't miss this spectacular showcase of music at its finest!

NORMIE ROWE - THE STORY SO FAR

- WHERE** PILBEAM THEATRE
- WHEN** SAT 14 JUNE, 2:00PM
- COST** A \$69, C \$62.50,
G 10+ \$60 EACH



Normie was the first King Of Pop. He was Australia's most successful pop idol during the explosion of pop music and fashion in the mid-60s.

He released a string of hits that are an important contribution to the soundtrack of the Baby Boomer generation. Que Sera Sera, Shakin' All Over, It Ain't Necessarily So, It's Not Easy and Ooh La La, among them, along with a constant media frenzy produced fan hysteria unseen before or since for an Australian artist. At the peak of his popularity, Normie was called up for Army service. He served in Vietnam and on his return, found that his earlier success was of little value. He started again and at the same time honed his acting and vocal skills.

He joined the TV series Sons & Daughters and later performed his critically acclaimed role as Jean Valjean in Les Miserables. The Story So Far...will provide a soundtrack and insights into an ever-cheerful life filled with exhilarating highs and shattering lows. Enjoy!

event guide

THE BEATLES ANTHOLOGY



WHERE PILBEAM THEATRE
WHEN FRI 19 JUNE. 7:30PM
COST A \$69, C \$64, J (3-17) \$49,
FOT \$62
G 6+ ADULTS \$59 EA

Join us on a Magical Mystery Tour to relive the years of the Greatest Rock'n'Roll band of all time.

The Beatles need no introduction. THE most influential, highest selling, most important band in music history. In this live 2 hour show, we will take you down the Long and Winding Road – from the "Fab Four" days of matching suits and matching mop hair, to the "experimental" days of Tangerine Trees, Marmalade Skies, and Kaleidoscope Eyes. It's all there - the costumes, the hairstyles, the banter, the left-handed "Paul".

All you need is love...and a ticket to this show!

ROCKHAMPTON SYMPHONY ORCHESTRA



WHERE PILBEAM THEATRE
WHEN SAT 20 JUNE, 7:30PM
COST A \$55, C \$50, G 6+ \$48EA
PAY YOUR AGE: PATRONS
AGED 3 TO 26 YEARS PAY
\$1 PER YEAR OF AGE.

The Capricornian presents Echoes of Europe, with Rockhampton Symphony Orchestra, featuring violinist Margaret Blades.

Be swept away by the colour, drama, and brilliance of Europe's great musical masters. Under the baton of Chief Conductor Owen Clarke, RSO continues its mission to bring the full breadth of orchestral music to our region with a luminous midwinter program.

The evening will open with Mozart's sparkling, effervescent, and irresistibly theatrical Overture to The Magic Flute —an explosion of wit, wonder, and symphonic charm. We'll then welcome acclaimed Australian violinist Margaret Blades to the Pilbeam Theatre stage for Mendelssohn's beloved Violin Concerto in E Minor, a work celebrated for its lyrical beauty, emotional depth, and breathtaking virtuosity. The program will conclude with Dvorak's stormlit, dramatic, and powerfully expressive Symphony No. 8 in G Major, a youthful masterpiece that surges with energy and romantic intensity.

Proudly supported by The Capricornian and Lupton Stewart Orthodontics.

MORNING MELODIES: LIVE AT FRANKIE'S

WHERE PILBEAM THEATRE
WHEN MON 22 JUNE, 11:00AM
COST ADM \$25, G6+ \$20EA,
FOT \$20



Our June Morning Melodies! Internationally acclaimed vocalist and cabaret performer Thomas Armstrong-Robley presents Live at Frankie's: The Songs of Valli & Sinatra.

Direct from performances in over 40 countries, internationally acclaimed showman Thomas Armstrong-Robley and his world-class band present Live at Frankie's: The Songs of Valli & Sinatra. The show delivers rousing renditions of classics including My Way, Can't Take My Eyes Off You, Fly Me to the Moon, December '63, The Lady is a Tramp, Sherry, That's Life, Walk Like a Man, Luck Be A Lady and many more. With its combination of world-class vocals, heartfelt storytelling and stellar musicianship, Live at Frankie's is a high-octane, humorous, must-see celebration of Frank Sinatra & Frankie Valli that really is "too good to be true!"

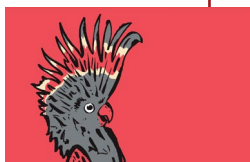
Morning Melodies is presented by Rockhampton Regional Council.

There will be a free morning tea before the show, from 10am.



MELBOURNE COMEDY FESTIVAL ROADSHOW

WHERE PILBEAM THEATRE
WHEN FRI 26 JUNE, 7:30PM
COST ADM \$50, G 4+ \$45EA,
FOT \$45. SCHOOL GROUP
DISCOUNTS AVAILABLE.



Australia's biggest comedy festival is hitting the road and bringing the laughs to you!

Join the Melbourne International Comedy Festival Roadshow as it journeys around Australia, delivering hot and tasty comic treats to audiences near and far. With a curated line-up of comedy legends and fresh faces from Australia and beyond, the Roadshow has all your comedy bases covered (no joke) – all in one side-splitting show! For almost three decades the Melbourne International Comedy Festival has been touring far and wide, bringing giggles, guffaws and good times to Australia – and now it's your turn Rockhampton. Experience the fun of Australia's largest comedy festival in your own backyard. Grab your mates and get on board the Roadshow.

Presented by Rockhampton Regional Council. Part of the 2026 See It Live Theatre Season.

For mature audiences. Coarse language and adult themes.

GRAEME CONNORS ... WHAT'S NEXT?



WHERE PILBEAM THEATRE

WHEN THUR 2 JULY, 7:30PM

COST A \$79.50, C \$74.50,
J 3-16YRS \$45.50,
G 8+ \$72.50,
F OF 4 \$229 (\$57.25EA)

Graeme Connors keeps moving... there's always something new on his horizon... songwriting, recording, touring... you're never sure where he'll take you next...

But you can be sure it's somewhere you haven't been before. In a career spanning 50 years and 20 albums, Graeme has never rested on his laurels. From his landmark 1988 release 'North' through to his latest masterpiece What Next?, his career is peppered with hits and classics: A Little Further North Each Year, Let The Canefields Burn, The Road Less Traveled and The Ringer and the Princess, to highlight just a few of his many ARIA, APRA and PPCA awarded songs and Albums. Graeme brings new music to the stage in 2026 to accompany his career defining favourites. So don't miss Graeme Connors... What Next? - another leap forward from the master of the unexpected...

ROCK'N'ROLL NEVER FORGETS



WHERE PILBEAM THEATRE

WHEN SAT 4 JULY, 11:00AM

COST A \$79, C \$74, G 8 + \$74EA

Rock'n' Roll Never Forgets- The Bob Seger & Silver Bullets Ultimate Experience. Join our 9-piece band, 100% live as they take you on an ultimate journey of Rock'n'Roll.

A once in a lifetime opportunity to bring on your 'Night Moves' as we take you through the many hit songs performed by Grammy Award winner and Rock and Roll Hall of Famer Bob Seger. Rock n Roll Never Forgets - The Ultimate Bob Seger Experience comprises many 'Old Time Rock'n'Roll' anthems including Main Steet, Against the Wind, Hollywood Nights, Still the Same, Roll Me Away, Shake Down and many more.

Lance Friend delivers an energetic, powerhouse performance accompanied by 8 of the most talented musicians that are The Silver Bullets, 'Turn The Page' with an energetic Rock'n'Roll spectacular the likes you'll never see or hear outside of Detroit Michigan.

CIRQUE NOUVELLE

WHERE PILBEAM THEATRE

WHEN SUN 5 JULY, 6:00PM

COST A \$65, C \$60,
F (2 A + 2 J) \$210,
J (3-17) \$45, G 8+ \$55,
FOT \$60



Cameo Rascale Entertainment presents **Cirque Nouvelle - A New Evolution of Circus.**

After sell out shows across Australia, this internationally acclaimed all-star cast are back and ready to present a truly unique and versatile production.

This multit talented line-up of circus performers, each world-class in their own right, has combined their acrobatic, juggling, aerial and balancing talents together to create a show like no other. This outstanding cast is led by a quirky ringmaster struggling with a fear common among us all... change. We invite you to embark on this heart-warming journey, which is sure to thrill, captivate and amaze the whole family. High-energy, visually stunning, and a unique circus spectacle. Book now!

TOM GLEESON

WHERE PILBEAM THEATRE

WHEN SAT 11 JULY, 7:00PM

COST A \$64.90, C \$59.90,
G 6+ A \$59.90 EACH



Hard Quiz host. **T**askmaster Australia host. **G**old Logie winner. **7** times AACTA winner. **T**om Gleeson is completely out of touch. **H**is head is up his arse. **C**ome along to the show and take him down a peg.

** Recommended for ages 15+

EMMA MEMMA'S JUNGLE PICNIC

WHERE PILBEAM THEATRE

WHEN SUN 12 JULY, 10:00AM

COST ADM: \$42.50
BABIES IN ARMS: 12
MONTHS AND UNDER
FREE ON THE KNEE.



The Jungle Picnic tour brings Emma Memma's much-anticipated new album to life on stage, transforming its playful songs into a joyful, movement-filled live experience for children and their families.

Inspired by the Jungle Picnic album, the show invites audiences to bring their picnic baskets and their pet rocks, jump up and dance with the elephants, sing along to deliciously catchy tunes, and play games alongside Emma Memma and her Memma mates.

events calendar

MAY

5-24	Rockhampton Eisteddfod	PT, WRCC
5-30	Reid's Gallery and Gifts	WRCC
9	Artisans of CQ Markets	RSG
15	Luke Kidgell	PT
15-16	Lifeline Bookfest 2026	RSG
16	Creedence Clearwater Collective	PT
20	The Wiggles - Big Little Show	PT
28	Echoes of Pink Floyd	PT
29	The Big Chill Out	PT
30	Dolly: I will Always Love You	PT

JUNE

3	Water Mirror	PT
5	Michael Jackson HISTORY	PT
6	ABBA; Thank You For The Music	PT
7	Seven Drunken Nights	PT
8	Sweet Caroline	PT
9	The Understudy	PT
9	Masters of Pop	PT
11-12	Rocky Ag Show	PT
13	R'ton Grammar School Music Festival	PT
14	Normie Rowe	PT
19	Beatles Anthology	PT
20	Rockhampton Symphony Orchestra	PT
22	Morning Melodies: Live at Frankie's	PT
26	Melbourne Comedy	PT

PT: Pilbeam Theatre **WRCC:** Walter Reid Cultural Centre
RSG: Rockhampton Showgrounds **HV:** Heritage Village
MB: Music Bowl **O:** Other Venue

SEEITLIVE.COM.AU 

The Pilbeam Theatre is owned and operated
by Rockhampton Regional Council.

