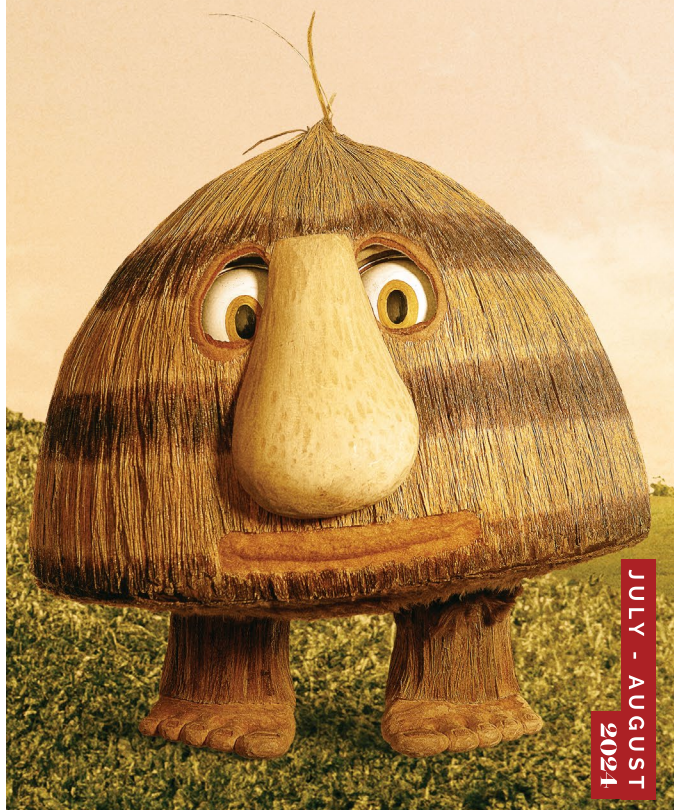


# spotlight

EVENT GUIDE



## FEATURE EVENT

GRUG  
26 AUGUST  
PILBEAM THEATRE

[SEEITLIVE.COM.AU](http://SEEITLIVE.COM.AU)



## BUYING TICKETS

The Pilbeam Theatre is located on the corner of Victoria Parade and Cambridge Street, Rockhampton.

You can buy tickets in the following ways:

**At the Pilbeam Theatre Box Office** | Victoria Parade entrance

**By Phone** | on 4927 4111

**Online** | [www.seeitlive.com.au](http://www.seeitlive.com.au)

## FRIENDS OF THE THEATRE

If you enjoy the theatre, why not become a Friend of the Theatre? Friends of the Theatre is an organisation where members volunteer to work in various aspects of the theatre such as ushering, bar, candy bar and program selling. Friends receive discounts to many of the shows listed in Spotlight, and also receive a newsletter mailed direct to them.

Each time a Friend of the Theatre works they receive a Performance Work Voucher, which is exchanged for tickets to events. Unlimited seats are available in exchange for Performance Work Vouchers on events in Spotlight bearing the blue star symbol. For other events, voucher seats are limited to a total of six seats per performance. Further details as well as membership forms are available from the Box Office.

## GENERAL INFORMATION

Theatre programs start promptly at the advertised start time and latecomers will not be admitted until a suitable break in the performance. Smoking is not allowed in any part of the Pilbeam Theatre or other Council venues.

The use of cameras and recording devices during performances is illegal and penalties for infringement of copyright in this way are severe. Please ensure all mobile phones are switched off before entering the auditorium. Crying or fidgety children can be a distraction to other theatregoers and performers, so if you bring your small child to the theatre, please book an aisle seat in case you need to exit the auditorium.

## TICKETING ABBREVIATIONS

**A:** Adult      **S:** Student (Tertiary)      **J:** Junior \*  
**C:** Concession      **FoT:** Friend of Theatre      **SC:** Senior's Card  
**P:** Pensioner      **G10+:** Group of 10 or more      **F:** Family  
**T:** Teacher (School Group)      **SS:** School Student (School Group)

\*Preschool and school age, 3 yrs to 17 yrs. May have additional age restrictions. Please check with the Box Office to confirm eligibility for a particular price category.

## ROCKY FLIX: MOLE AGENT

**WHERE** WALTER REID CULTURAL CENTRE

**WHEN** THU 4 JUL. 7:00PM

**COST** A \$17, C \$15, M \$12



**Rocky Flix presents Mole Agent, the story of the most unusual Documentary of the Year. An 83-year-old goes undercover in a Chilean Nursing Home, in a warm hearted and surprising look at age and intimacy.**

Chilean with English subtitles. Rated M. gomins

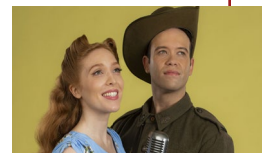
[www.facebook.com/rockyflixline](http://www.facebook.com/rockyflixline)

## THE SUNSHINE CLUB

**WHERE** PILBEAM THEATRE

**WHEN** SAT 6 JULY. 7:30PM

**COST** A \$45, C \$41,  
J 3-17 yrs \$30,  
G 6+ A \$39,  
FOT \$39, T \$39,  
SS \$17



**The Sunshine Club is an award-winning musical play that tells the story of Frank Doyle, an Aboriginal serviceman who has come home from World War II to find that although the wider world may have changed, attitudes back home in Brisbane are just the same. Filled with a defiant energy and ambition for a better life, Frank starts The Sunshine Club, a place where black and white can meet and, most importantly, dance. Here he dreams of a future where he can dance in step with Rose, the girl next door, the girl of his dreams.**

The Sunshine Club features a talented cast of 11, including Rockhampton's Garret Lyon along with other emerging and established First Nations artists, and a five piece live band.

Written and Directed by Wesley Enoch. Music by John Rodgers. Produced by HIT Productions.



## review us

Attended one of our events and loved it?  
Leave us a review on TripAdvisor!



## ARTISANS OF CQ MARKET

### ARTISANS OF CQ MARKET

**WHERE** ROBERT SCHWARTEN  
PAVILION, ROCKHAMPTON  
SHOW GROUNDS

**WHEN** SAT 6 JULY. 8:00AM - 1:00PM

**COST** FREE ENTRY

**S**howcasing the best handmade products Central Queensland has to offer. Join our Artisans for a wonderful morning market complete with live music, morning teas, a great vibe and amazing stalls!

## SNAKES AND LADDERS



**WHERE** WALTER REID CULTURAL  
CENTRE

**WHEN** FRI 12 JULY. 7:30PM  
SAT 13 JULY. 7:30PM  
FRI 19 JULY. 7:30PM  
SAT 20 JULY. 7:30PM

**COST** A \$27, C \$22,  
J (3-17yrs) \$17

**F**amilies are difficult. Retired sisters, Charlie and Emily, are having a quiet Sunday evening when suddenly Charlie's daughter Beth arrives. She's left her husband and come home to Mum. Her unexpected arrival ends up revealing secrets and lies that have been hidden for years.

It's amazing what can happen when you mix two bottles of wine and an innocent game of Snakes and Ladders. Produced by Rockhampton Little Theatre. Written and directed by Tony Moore. Performed by Amelia Fox, Lucia Grant, and Joanna Webb.

## MARY POPPINS



**WHERE** PILBEAM THEATRE

**WHEN** FRI 19 JULY. 7:00 PM  
SAT 20 JULY. 7:00 PM  
SUN 21 JULY. 2:00 PM

**COST** A \$35, C \$27, FOT \$25,  
F (2 A + 2J), \$27.50ea pp.  
J (2-11yrs) \$25, S \$25.00

**E**mmaus College performs Mary Poppins, a delightful musical based on the book series by P.L. Travers and, more notably, the 1964 musical film starring Julie Andrews and Dick Van Dyke.

The stage show features many of the original songs made famous by the Oscar-winning duo of Richard and Robert Sherman, with additional music and lyrics from George Stiles and Anthony Drewe. Mary Poppins is the 40th Annual Musical for Emmaus College, showcasing a long and proud history of music theatre opportunities for college students over the many years.

spotlight

## FOURTEEN

**WHERE** PILBEAM THEATRE

**WHEN** WED 24 JULY. 11:00AM  
WED 24 JULY. 7:30PM

**COST** A \$19, J (3-17yrs) \$15



**S**hannon Molloy is a year 9 student at an all-boys rugby-mad Catholic school in regional Queensland, with a secret that no one can ever find out. Shannon is gay.

Based on the best-selling memoir by award-winning journalist Shannon Molloy, Fourteen is the inspirational true story of growing up gay in Central Queensland, transformed into a powerful must-see theatre production by nationally acclaimed Shake & Stir Theatre Co. Set to a nostalgic mixtape of 90s bangers from all your faves, from Shania Twain to The Spice Girls, Fourteen addresses the trials and tribulations of growing up with honesty, humour, and heart.

**Patron advice:** Suitable for ages 14+

School group discount applies to matinee performance.

Visit [seeitlive.com.au](http://seeitlive.com.au) for more details.

Presented by Rockhampton Regional Council  
Part of the 2024 See It Live Theatre Season

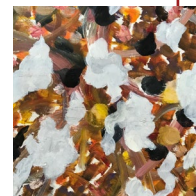


## ON THE EDGE - CQ CONTEMPORARY ARTISTS EXHIBITION

**WHERE** GALLERY 6, WALTER REID  
CULTURAL CENTRE

**WHEN** 25-28 JULY.  
10:00AM - 4:00PM DAILY

**COST** FREE



**O**n the Edge is a CQ Contemporary Artists exhibition of diverse artwork reflecting the culture and landscape of the Rockhampton region.

All artwork for sale. Exhibition is part of Rockhampton River Festival activities on 27-28 July. There will be a free children's workshop Saturday and Sunday 27 and 28 July at Studio 4, Level 1.

## find us on facebook

Keep up to date with what is happening at the Pilbeam Theatre, see sneak peeks, previews, behind the scenes video of upcoming events and more at our Facebook page.

[www.facebook.com/pilbeamtheatre](http://www.facebook.com/pilbeamtheatre)

event guide

## EMBROIDERERS' GUILD EXHIBITION



**WHEN** WALTER REID CULTURAL CENTRE FRONT GALLERY

**WHEN** 26 JULY - 6 AUG.  
10:00AM - 4:00PM DAILY

**COST** FREE ENTRY

**Rockhampton Embroiderers' Guild is holding an exhibition in the front Gallery of the Walter Reid Cultural Centre from 26 July to 6 August including Rockhampton River Festival. It will be open daily from 10-4 with opening night on 26 July.**

Exhibits will be recent completions featuring what members learn at the Guild. Come and see what you could learn. Enquires to Suzanne on **49283394** or find us on Facebook.

## SWING, STAMP AND SING

**WHERE** WALTER REID CULTURAL CENTRE AUDITORIUM

**WHEN** SUN 28 JULY. 2:00PM  
(DOORS OPEN FOR SEATING AT 1.45PM)

**COST** A \$10, P \$8,  
J (U12) \$5, F \$26



**Rockhampton Youth Orchestra (RYO) and Unisong Choir will be joining forces to present an eclectic selection of well-known pieces of music in Swing, Stamp and Sing.**

From classics ballads and folk hits of the 60s to popular marches and Largo, the second movement from Dvořák's New World Symphony, RYO and Unisong Choir hope to have you swinging, stamping, and/or singing with them.

## RSO JAZZ IN CONCERT



**WHERE** WALTER REID CULTURAL CENTRE AUDITORIUM

**WHEN** SAT 27 JULY. 11:00AM  
(DOORS OPEN FOR SEATING AT 10:45AM)

**COST** A \$10, P \$8,  
J (U12) \$5, F \$26

**If you like that big band sound then you'll love RSO Jazz in Concert.**

RSO Jazz have 21 musicians who always delight audiences with their professional standard in performance. RSO Jazz in Concert will feature a dynamic program of popular classics of Swing, Latin, Ballad and popular music.

**WHERE** PILBEAM THEATRE

**WHEN** FRI 2 AUG. 7:00PM  
SAT 3 AUG. 7:00PM

**COST** A \$30, C \$25,  
J (3-17yrs) \$20, F \$85



**Embark on a magical journey through snow-capped mountains and icy realms as The Rockhampton Grammar School's Primary students proudly present Disney's Frozen Jr.!**

Join us for an enchanting musical adventure filled with beloved characters, catchy tunes, and heartwarming moments that will melt even the iciest of hearts. With dazzling performances by our talented young stars, this timeless tale of sisterhood, friendship, and self-discovery will leave you spellbound. Don't miss your chance to experience the magic of Disney's Frozen Jr. come to life on stage! Book your tickets now and let the warmth of friendship thaw the coldest of winters.

## SUITE SERENADES FOR STRINGS



**WHERE** WALTER REID CULTURAL CENTRE AUDITORIUM

**WHEN** SAT 27 JULY. 2:00PM  
(DOORS OPEN FOR SEATING AT 1:45PM)

**COST** A \$10, P \$8,  
J (U12) \$5, F \$26

**To coincide with Rockhampton River Festival, Rockhampton Youth Orchestra Inc. presents CQ STRINGS performing Suite Serenades for Strings.**

This repertoire will not only include well known classics such as Mozart's Eine Kleine and Dvorak's Serenade for Strings but also string serenades and suites from lesser-known composers such as Beliczay and Karłowicz. The repertoire will feature solos on violin, viola and cello.

**WHERE** ROCKHAMPTON SHOWGROUNDS

**WHEN** SAT 3 AUG. 6:00AM - 4:00PM

**COST** A \$8, J (U12) \$2,  
UNDER 2 YRS  
FREE ENTRY



**The annual Rocky Swap is back and this year will be on Saturday 3rd August. With more than 1000 sites available at this year's Swap, you'll be sure to find some of the treasures you've been looking for!**

With food, drinks and a huge variety of stalls selling all kinds of products. From car and bike parts to home decor, plants, clothing and jewellery plus our new Fashion Rummage and Craft Destash sites, there's something for everyone. Most areas are at least 70% rebooked as at May, with some areas already sold out. ATMs onsite.



## ROCKY FLIX: THE MOON IS UPSIDE DOWN



**WHERE** WALTER REID CULTURAL CENTRE  
**WHEN** THU 8 AUG.  
**COST** A \$17, C \$15, M \$12

**T**hree women – a duped mail-order bride, a numbed Anesthetist and an empty nester, are determined to have a romantic weekend on an unexpected mission of mercy.

New Zealand. Rated M. 100minutes. [www.facebook.com/rockyflixinc](http://www.facebook.com/rockyflixinc)

## TINA - THE ULTIMATE TRIBUTE



**WHERE** PILBEAM THEATRE  
**WHEN** FRI 9 AUG. 8:00PM  
**COST** A \$74.40, C \$67.50, G 6+ \$69.40, CHILD \$44.35

**G**et the electrifying concert experience of Tina Turner with this glorious, Energetic stage production, brimming with Tina hits from the 60s, 70s, 80s & 90s. The powerful raspy vocals, high-intensity dancing and thrilling stage presence of Caroline Borole live on stage, complete with band, brass section, backing vocalists and dancers make this the definitive tribute, and a fabulous fun night out!

Hear all the energetic Rock and soulful RnB hits that made Tina one of the 20th century's biggest names in music - Simply the Best, What's Love Got to Do With It, River Deep Mountain High and many more.

## ANYTHING GOES



**WHERE** PILBEAM THEATRE  
**WHEN** FRI 16 AUG. 7:00PM,  
SAT 17 AUG. 7:00PM,  
SUN 18 AUG. 1:00PM  
**COST** A \$35, C \$29, F \$110 (\$27.50ea), J (3-17 yrs) \$25, FOT \$25.

**T**he Rockhampton Grammar School presents ANYTHING GOES. The musical is set aboard the ocean liner S. S. American, where nightclub singer/evangelist Reno Sweeney is enroute from New York to England. Her pal Billy Crocker has stowed away to be near his love, Hope Harcourt, but the problem is, Hope is engaged to the wealthy Lord Evelyn Oakleigh.

Joining this love triangle on board the luxury liner are Public Enemy #13, Moonface Martin and his sidekick-in-crime Erma. With the help of some elaborate disguises, stunning tap-dancing and good old-fashioned blackmail, Reno and Martin join forces to help Billy in his quest to win Hope's heart.

spotlight

## ARTISANS OF CQ MARKET

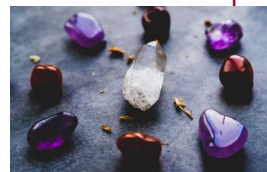
**WHERE** WALTER PIERCE PAVILION, ROCKHAMPTON SHOW GROUNDS  
**WHEN** SAT 17 AUG. 8:00AM - 1:00PM  
**COST** FREE ENTRY

ARTISANS OF  
CQ MARKET

**S**howcasing the best handmade products Central Queensland has to offer. Join our Artisans for a wonderful morning market complete with live music, morning teas, a great vibe and amazing stalls!

## ROCKHAMPTON GEM EXPO

**WHERE** ROBERT SCHWARTEN PAVILION  
**WHEN** SAT 17 AUG. 9:00AM - 4:00PM  
SUN 18 AUG. 9:00AM - 2:00PM  
**COST** A \$5, J (12-18yrs) \$2

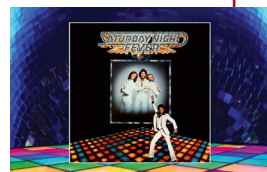


**T**he Annual Rockhampton Gem Expo showcases the work of Rockhampton Lapidary Club members in a competition as well as providing a venue for the public to purchase rocks, gems, minerals and crystals as well as tools for the hobbyist.

There will be traders from across Australia.

## THE BEST OF THE BEE GEES SATURDAY NIGHT FEVER

**WHERE** PILBEAM THEATRE  
**WHEN** SAT 23 AUG. 8:00PM  
**COST** A \$79, C \$69, FOT \$69, G 6+ A \$69ea



**I**f you're a Bee Gees fan, this is the concert for you. The Best of the Bee Gees honours the legacy of the Grammy awarded Saturday Night Fever double disco album, with special guests child actor/original Bee Gees drummer, Colin "Smiley" Petersen and global chanteuse Roslyn Loxton. In a two-act performance, the Best of the Bee Gees opens with the greatest hits spanning the decades, followed by a high-energy second act with the songs from Saturday Night Fever which defined the disco era.

The Best of the Bee Gees received standing ovations celebrating their Silver Anniversary nationally in 2023. This year, you're invited to Put on Your Boogie Shoes, white suits and frills and salute almost 50 years since the 1977 Saturday Night Fever release, with chartbusters from the Bee Gees, K.C. and the Sunshine Band, Yvonne Elliman, The Trammps and others.

event guide

## CQ HEALTH SPORT & RECREATION EXPO



**WHERE** ROBERT SCHWARTEN  
PAVILION, ROCKHAMPTON  
SHOW GROUNDS

**WHEN** SUN 25 AUG.  
9:00AM - 1:00PM

**COST** FREE ENTRY

**E**xperience an array of health and wellbeing services, alongside sporting and community groups at the CQ Health Sport and Recreation Expo. Discover offerings available to the Rockhampton Community.

Talk to the My health for life team and do a health check to see how your health is tracking and find out if you can benefit from the My health for life program or other health initiatives.

## GRUG



**WHERE** PILBEAM THEATRE

**WHEN** MON 26 AUG.  
10:00AM  
1:00PM  
6:00PM

**COST** \$11. UNDER 2 YRS FREE

**G**rug is a live stage presentation based on the much-loved picture book character created by Ted Prior. Grug began his life as the top of a Burrawang tree that fell to the ground. Resembling a small, striped haystack with feet and a nose, Grug is fascinated by the world around him and solves everyday problems creatively and without fuss. When dancing instructions are too difficult to understand, he invents his own dance and calls it 'The Grug'. When snails eat his cabbages, Grug plants more cabbages so there will be enough for both him and the snails.

Having performed to more than 50,000 children and families worldwide, Grug is perfect for our youngest theatre lovers. Suitable for ages 2-6 years. Produced by Windmill Theatre Company.

Presented by Rockhampton Regional Council.



## friends of theatre

If you enjoy the theatre, then why not become a member of Friends of the Theatre?

Friends of the Theatre is a group of people who want to be part of the exciting world of live theatre. Friends lend a hand by volunteering to work in the bar, candy bar, program selling and ushering areas. But it's not all work and no play. Friends who volunteer to work also receive vouchers which can be redeemed for tickets to shows (depending on availability).

For more information, contact the Pilbeam Theatre Box Office on 4927 4111 or visit [www.secitlive.com.au](http://www.secitlive.com.au)

## SOOSHI MANGO: HOME MADE

**WHERE** PILBEAM THEATRE

**WHEN** WED 28 AUG. 7:30PM

**COST** VIP \$199. SEE EVENT  
INFORMATION ON WEBSITE  
FOR VIP PACKAGE  
INCLUSIONS  
A RESERVE \$99  
B RESERVE \$85  
C RESERVE \$69



**H**omegrown comedy heroes Sooshi Mango perform their most exciting live show yet, Home Made! "A show where you can get together with La Familia and not fight...maybe!"

TEG Dainty is thrilled to present one of Australia's biggest-selling comedy acts, Sooshi Mango, and their all-new tour, Home Made, hitting a whopping 25 cities around the country. This follows an international tour earlier this year and a sold out Australian tour in 2022 which saw them break the house record at Rod Laver and bring laughter to over 100,000 fans.

## CREDENCE CLEARWATER COLLECTIVE

**WHERE** PILBEAM THEATRE

**WHEN** SAT 31 AUG. 7:30PM

**COST** A \$69, C \$64, S \$64,  
J 3-17yrs \$49, FOT \$62  
G6+A \$59ea.



**R**eturning by popular demand! We invite you to join us for a night of Creedence Clearwater Revival and John Fogerty, as we celebrate the music of one of the world's most iconic bands – from the songs they wrote, to the songs covered, to the songs they wrote for others. From their album debut in 1968 to their last album in 1972, CCR was a juggernaut of phenomenal proportions.

No other band has created such an impact in such a short time. The Creedence Clearwater Collective brings to the stage a band that captures the unique CCR sound.

## CAPRICON POP CULTURE CONVENTION

**WHERE** ROCKHAMPTON  
SHOWGROUNDS

**WHEN** SAT 31 AUG.



**J**oin us for the CapriCon - the largest single-day pop culture convention in Central Queensland showcasing a wide spectrum of pop culture including comics, collectibles, cosplay, anime, medieval, gaming, art, steampunk and more.

[www.capriconrockhampton.com.au](http://www.capriconrockhampton.com.au)

# events Calendar

JULY

|              |                                    |      |
|--------------|------------------------------------|------|
| <b>4</b>     | Rocky Flix: Mole Agent             | WRCC |
| <b>6</b>     | The Sunshine Club                  | PT   |
| <b>6</b>     | Artisans of CQ Market              | RSG  |
| <b>12-20</b> | Snakes and Ladders                 | WRCC |
| <b>19-21</b> | Mary Poppins                       | PT   |
| <b>24</b>    | Fourteen                           | PT   |
| <b>25</b>    | CQ Contemporary Artists Exhibition | WRCC |
| <b>26</b>    | Embroiderer's Guild Exhibition     | WRCC |
| <b>27</b>    | RSO Jazz in Concert                | WRCC |
| <b>27</b>    | Suite Serenades for Strings        | WRCC |
| <b>28</b>    | Swing, Stamp and Sing              | WRCC |

AUGUST

|              |  |      |
|--------------|--|------|
| <b>2-3</b>   | Frozen                                       | PT   |
| <b>3</b>     | Rocky Swap                                   | RSG  |
| <b>8</b>     | Rocky Flix: The Moon is Upside Down          | WRCC |
| <b>9</b>     | Tina - The Ultimate Tribute                  | PT   |
| <b>16-18</b> | Anything Goes                                | PT   |
| <b>17</b>    | Artisans of CQ Market                        | RSG  |
| <b>17-18</b> | Rockhampton Gem Expo                         | RSG  |
| <b>23</b>    | Best of the Bee Gees<br>Saturday Night Fever | PT   |
| <b>25</b>    | CQ Health Sport and Recreation Expo          | RSG  |
| <b>26</b>    | Grug   | PT   |
| <b>28</b>    | Sooshi Mango                                 | PT   |
| <b>31</b>    | Creedence Clearwater Collective              | PT   |
| <b>31</b>    | Capricorn                                    | RSG  |

**PT:** Pilbeam Theatre

**WRCC:** Walter Reid Cultural Centre

**RSG:** Rockhampton Showgrounds

**HV:** Heritage Village

**MB:** Music Bowl

**O:** Other Venue

SEEITLIVE.COM.AU 

The Pilbeam Theatre is owned and operated by Rockhampton Regional Council.

