

spotlight

EVENT GUIDE



MAY - JUNE
2024

FEATURE EVENT

WHALEBONE
27-29 JUNE
WALTER REID CULTURAL CENTRE

SEEITLIVE.COM.AU



BUYING TICKETS

The Pilbeam Theatre is located on the corner of Victoria Parade and Cambridge Street, Rockhampton.

You can buy tickets in the following ways:

At the Pilbeam Theatre Box Office | Victoria Parade entrance

By Phone | on 4927 4111

Online | www.seeitlive.com.au

FRIENDS OF THE THEATRE

If you enjoy the theatre, why not become a Friend of the Theatre? Friends of the Theatre is an organisation where members volunteer to work in various aspects of the theatre such as ushering, bar, candy bar and program selling. Friends receive discounts to many of the shows listed in Spotlight, and also receive a newsletter mailed direct to them.

Each time a Friend of the Theatre works they receive a Performance Work Voucher, which is exchanged for tickets to events. Unlimited seats are available in exchange for Performance Work Vouchers on events in Spotlight bearing the blue star symbol. For other events, voucher seats are limited to a total of six seats per performance. Further details as well as membership forms are available from the Box Office.

GENERAL INFORMATION

Theatre programs start promptly at the advertised start time and latecomers will not be admitted until a suitable break in the performance. Smoking is not allowed in any part of the Pilbeam Theatre or other Council venues.

The use of cameras and recording devices during performances is illegal and penalties for infringement of copyright in this way are severe. Please ensure all mobile phones are switched off before entering the auditorium. Crying or fidgety children can be a distraction to other theatregoers and performers, so if you bring your small child to the theatre, please book an aisle seat in case you need to exit the auditorium.

TICKETING ABBREVIATIONS

A: Adult	S: Student (Tertiary)	J: Junior *
C: Concession	FoT: Friend of Theatre	SC: Senior's Card
P: Pensioner	G10+: Group of 10 or more	F: Family
T: Teacher (School Group)	SS: School Student (School Group)	

*Preschool and school age, 3 yrs to 17 yrs. May have additional age restrictions. Please check with the Box Office to confirm eligibility for a particular price category.

REID'S GALLERY AND GIFTS

WHERE WALTER REID CULTURAL CENTRE

WHEN MON 29 APR - FRI 31 May
10:00AM - 3:00PM



Attention all discerning buyers! You have the opportunity to purchase beautiful handmade gifts for the special people in your lives.

Reid's Gallery and Gifts will be open from Monday 29 April until Friday 31 May from 10am till 3pm excluding public holidays.

Note: excluding public holidays.

BROADWAY & BEYOND IS BACK IN MAY 2024!

WHERE PILBEAM THEATRE

WHEN FRI 3 MAY, SAT 4 MAY
7.30PM

COST A \$60, C \$50,
J(2-12yrs) \$40,
G10+ \$50ea



With an exciting ensemble of 20 of the region's finest musicians, singers and dancers, B&B24 will be a 2-hour high energy live show of dazzling song and dance, featuring hits from Grease, Wicked, Chicago, Les Miserables, Hamilton, Jersey Boys, Moulin Rouge, Jesus Christ Superstar, Elton John, Lady Gaga, Adele and more!

This year's performers include the vocal talents of Angelo Conway, Amanda Hock, Claire Janes, Brad Villiers, Jacob Goves, Maddi McDonald, Emma McGuire & Alicia Kyriazis along with musicians from the band of Rockhampton Regional Council's productions of Grease, Jersey Boys, Mamma Mia, Kinky Boots & We Will Rock You, plus an ensemble of some the region's most experienced dancers.

review us

Attended one of our events and loved it?
Leave us a review on TripAdvisor!



BEEF 2024

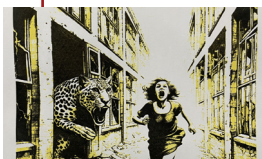


WHERE ROCKHAMPTON SHOW GROUNDS
WHEN SUN 5 MAY - SAT 11 MAY
COST FROM \$15

Every three years Rockhampton, the Beef Capital of Australia, hosts the largest beef industry event in the Southern Hemisphere.

With more beef, more tech, more trade, more education, more entertainment, and welcoming back international visitors for the first time since 2018, Beef2024 will be beefier than ever. The full program and tickets are available now at www.beefaustralia.com.au.

POP GOES THE ARTIST



WHERE WALTER REID CULTURAL CENTRE, FRONT GALLERY
WHEN 3-8 MAY.
FRI 3 MAY 3:00 - 7:00 PM
SAT 4 - TUE 7 MAY - 10:00AM - 2:00 PM
COST FREE ENTRY

Capricornia Printmakers explore the art of screen printing with a nod to pop art in this fun pop-up exhibition.

A Friday evening opening, weekend workshop and t-shirt printing activities will be included in this five day event

capricorniaprintmakers.org.au

friends of theatre

If you enjoy the theatre, then why not become a member of Friends of the Theatre?

Friends of the Theatre is a group of people who want to be part of the exciting world of live theatre. Friends lend a hand by volunteering to work in the bar, candy bar, program selling and ushering areas. But it's not all work and no play. Friends who volunteer to work also receive vouchers which can be redeemed for tickets to shows (depending on availability).

For more information, contact the Pilbeam Theatre Box Office on 4927 4111 or visit www.secitlive.com.au

POP ON A TEE SHIRT

WHERE WALTER REID CULTURAL
CENTRE PRINTMAKERS
STUDIO GROUND FLOOR

WHEN SAT 4 MAY,
10:00AM - 2:00PM

COST \$5 PER PRINT



Print Day in May is an international printmaking event. Capricornia Printmakers participate each year, and this year they want the local community to POP on a Tee Shirt!

Come along to the Walter Reid Cultural Centre with a Tee Shirt of your choice, choose a pop art design from our collection of images, and we will print it on your tee shirt for a small cost while you wait. Meanwhile, you can view the amazing POP Art exhibition in the Front Gallery.

LIFELINE BOOKFEST

WHEN ROBERT SCHWARTEN
PAVILION,
ROCKHAMPTON
SHOWGROUNDS

WHEN FRI 24 MAY - SAT 25 MAY,
8:30AM - 4:00PM

COST FREE ENTRY



Bring your friends and family to the Lifeline Bookfest and lose yourself in preloved books, books and more books!

Hundreds of titles and a vast array of mystery, fantasy, humour, crime, romance, paperback, fiction, nonfiction and children's favourites. Also tables of clothing for all the family for \$2 an item (summer and winter).

ROCKHAMPTON EISTEDDFOD

WHERE PILBEAM THEATRE
WALTER REID CULTURAL
CENTRE

WHEN MAY 2024

COST SEE WEBSITE FOR DETAILS



Join us for the 87th Rockhampton Eisteddfod. For section details see the official programme. All Pilbeam Theatre session tickets are available for pre-purchase from the Box Office or www.secitlive.com.au

All Walter Reid Cultural Centre sessions are available to purchase from the venue as you enter.

Season passes are valid for both Pilbeam Theatre & WRCC sessions.

ISAAC BUTTERFIELD - LIVE!



WHERE PILBEAM THEATRE

WHEN THUR 23 MAY. 8:00PM

COST DIAMOND VIP M&G
(ROWS AA - A) \$129.95
PLATINUM
(ROWS B - K) \$79.95
GOLD
(ROWS L - R) \$59.95
SILVER
(ROWS S - U) \$39.95

Isaac Butterfield kicks off his 2024 World Tour in Australia!

A lethal combination of razor-sharp wit and unapologetic humour, Isaac fearlessly delves into the realities of modern life. From hilarious observations on everyday absurdities to fearless takes on controversial topics, join Isaac for a night of forbidden comedy where no topic is off-limits and laughter is guaranteed.

Patron Advice - Recommended age: 15+

AGRO UP LATE



WHEN PILBEAM THEATRE

WHEN FRI 24 MAY. 7:30PM

COST VIP PACKAGE \$120, A \$50

Grab your Samboy Chips, Troll Dolls, Tazo's and your favourite Goosebumps book – Australia's most iconic puppet is back, and he is naughtier than ever!

After 30 years in the business, Agro and "the bald man under the table", Jamie Dunn are back together and live on stage! Hosted by Ranger Stacey, get ready to stroll down memory lane and hear the naughtiest and funniest Aussie showbiz stories behind an accidental puppet that became an Aussie icon.

Note: This is an 18+ event.

find us on facebook

Keep up to date with what is happening at the Pilbeam Theatre, see sneak peeks, previews, behind the scenes video of upcoming events and more at our Facebook page.

www.facebook.com/pilbeamtheatre

PINK FLOYD

WHERE PILBEAM THEATRE
WHEN SAT 25 MAY. 8:00PM
COST A \$79, C \$74, J (3-17 yrs) \$49, G 8+ \$74pp, FOT \$74



Australia's own Echoes of Pink Floyd bring you their painstakingly crafted homage to Pink Floyd's amazing concert experience Delicate Sounds of Thunder.

This show, Signs of Life, will take the listener on a voyage bringing back those heady years of 1988, with the best songs from the Delicate Sound of Thunder tour lovingly reproduced for Pink Floyd fans of all ages and backgrounds. Audiences will be able to thrill to tracks that have not been performed live in this country for decades, as well as enjoying all the smash hits and stadium anthems they know and love.

ROCKHAMPTON GRAMMAR SCHOOL MUSIC FESTIVAL

WHERE PILBEAM THEATRE
WHEN SAT 1 JUNE
COST A \$25, C \$15, J \$10, F(2A + 2J) \$60



The Rockhampton Grammar School Music Festival

This Music Festival is an outstanding array of performances from the entire music department at The Rockhampton Grammar School. The Festival will feature captivating entertainment from soloists and ensembles including the massed choir, jazz ensembles, concert bands, signing choirs, string orchestras and a variety of small ensembles.

SIX60

WHERE PILBEAM THEATRE
WHEN SUNDAY 2 JUNE. 8:00PM
COST \$69.90



In a first for New Zealand's biggest and most decorated band, SIX60 will play exclusively in small towns and venues across Australia this May and June.

They'll be taking their biggest hits, some of which have only ever been heard live in Australia & New Zealand's biggest stadiums, rearranging them into acoustic and unplugged stripped back versions, and playing in some of Australia's most beloved small town venues.

THE PEASANT PRINCE



WHERE PILBEAM THEATRE

WHEN THU 6 JUNE. 1:00PM
FRI 7 JUNE. 10:00AM

COST A \$19, J (3-17 yrs) \$15

School group discounts available, limited public seating

Monkey Baa Theatre Company is thrilled to announce the return of its award-winning production The Peasant Prince in 2024.

The children's version of Li Cunxin's iconic autobiography, Mao's Last Dancer, The Peasant Prince is an extraordinary production of a remarkable story – of a peasant boy turned dance giant. It will inspire and enthrall young audiences.

DAVE O'NEIL: OVERWEIGHT LIGHTWEIGHT



WHERE PILBEAM THEATRE

WHEN FRI 7 JUNE. 7:30PM

COST ADMISSION: \$35
ADMISSION + MASTER
CLASS \$100

Fat funny man Dave O'Neil is taking brand new stand-up show, Overweight Lightweight on the road after playing to sold out audiences across the Melbourne International Comedy Festival and receiving some pretty spectacular reviews.

Dave O'Neil may call himself a lightweight, but with over 30 years of experience, his cheeky brand of humour has made him one of Australia's most loved comedians. Dave will be joined by his friend and regular on The Debrief podcast, Brad Oakes.

Stand up comdey masterclass: A great opportunity for budding local comedians. Led by Brad Oakes. Friday 7 June 3pm to 7pm.

AUSTRALIAN INXS SHOW

- WHERE** PILBEAM THEATRE
- WHEN** SAT 8 JUNE. 7:30PM
- COST** A \$69, C \$59,
J (6-12yrs) \$45,
F (2A + 2 J) \$200 (\$50ea),
G 10+ A \$500 (\$50 ea)

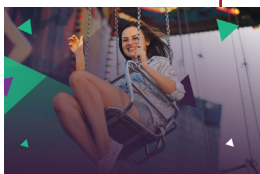


Fronted by the incredible Dellacoma Rio, whose uncanny portrayal of Michael Hutchence has captivated audiences worldwide, this authentic 6 piece band will take you on a journey through all the classic INXS hits that have made them a household name for decades.

Hailing from Melbourne, this unique INXS theatre experience delivers a breathtaking 'Australian Made' rock show unlike anything you've seen before!

ROCKY SHOW

- WHERE** ROCKHAMPTON SHOW GROUNDS
- WHEN** WED 12 JUNE - FRI 14 JUNE
- COST** TBC



Whether you like sideshows and showbags, dagwood dogs and daring stunts, crafty competitions, or rides and cuddly koalas the Rockhampton Agricultural Show has something for everyone at the Rockhampton Showgrounds!

Plus the brand new addition of an Agriculture Education Program running all three days of the event.

Visit www.rockyshow.com.au for more details

Note: 13 June Public Holiday

PETER WILLIAMS

- WHERE** WALTER REID CULTURAL CENTRE AUDITORIUM
- WHEN** FRI 14 JUNE.
- COST** FROM \$55. TICKETS ONLY AVAILABLE AT WRCC DOOR



After numerous sell out performances across Australia and overseas over the years, hugely popular psychic-medium Peter Williams returns to the stage for yet another amazing event of 2024.

He amazes audiences with his ability to communicate with loved ones passed over, but does so with energy, laughter and a heartfelt respect.

ROCKHAMPTON SYMPHONY ORCHESTRA: VIRTUOSO



WHERE PILBEAM THEATRE

WHEN SAT 15 JUNE. 7:30PM

COST A \$52, C \$48, G 6+A \$45, PAY-YOUR-AGE: \$1 per yrs of age 3 yrs to 26 yrs

The Capricornian presents Virtuoso! with phenomenal clarinet virtuoso, Andy Firth and Rockhampton Symphony Orchestra. Conductor Owen Clarke has devised an exciting fusion of jazz and classical music, featuring Mozart's famous Clarinet Concerto and Artie Shaw's contemporary Clarinet Concerto, renowned for its virtuoso cadenzas.

Andy Firth is widely regarded as one of the most outstanding clarinet players in the world today and is a performer not to be missed! Other works to be performed by Rockhampton Symphony Orchestra include Romeo and Juliet Fantasy Overture (Tchaikovsky), Prelude to the Afternoon of a Faun (Debussy), Dance of the Knights (Prokofiev), Lezginka (Khachaturian) and Danzon No. 2 (Arturo Márquez).

MORNING MELODIES: SOME ENCHANTED EVENING



WHERE PILBEAM THEATRE

WHEN MON 17 JUNE. 11:00AM

COST A \$20, P \$18, G 6+ \$17, FOT \$17

We have all heard their songs and enjoyed their musicals. Rodgers and Hammerstein were known as America's most successful musical theatre writing team.

Join us for a very special Morning Melodies concert paying tribute to the timeless music from the legendary Richard Rodgers and Oscar Hammerstein II. Featuring your favourite tunes from Carousel, The King and I, South Pacific, The Sound of Music and many more, Some Enchanted Evening is truly an enchanted concert of exquisite songs from the golden age of musicals.

In an intimate setting amongst the stars, come on a whimsical journey through song and dance, and be captivated by the beautiful music of You'll Never Walk Alone, Younger Than Springtime, I Have Dreamed, Climb Every Mountain, and Oh What a Beautiful Morning.

Note: Free morning tea is available before the show, from 10am.

Morning Melodies is presented by Rockhampton Regional Council



CATHOLIC SCHOOLS GALA CONCERT

WHERE

PILBEAM THEATRE

WHEN

WED 19 JUNE. 6:00PM

COST

FREE, TICKETS AVAILABLE
SHORTLY



Be moved by the music performed by the students of the **Rockhampton Catholic Schools' Instrumental Music program.**

This special event, presented by Catholic Education, Diocese of Rockhampton, showcases the talents of the instrumental students from Year 4 – Year 12 from these schools: The Cathedral College, Emmaus College, St Peter's Catholic Primary School, St Paul's Catholic Primary School, St Joseph's Catholic Primary School, Wandal St Joseph's Catholic Primary School, Park Avenue St Anthony's Catholic Primary School, and St Mary's Catholic Primary School.

Tickets are free and will be available shortly!

THE BEACH BOYS EXPERIENCE

WHERE

PILBEAM THEATRE

WHEN

THUR 20 JUNE. 7:30PM

COST

A \$69, C \$64, FOT \$62, S
\$64, J (3-17 yrs) \$49,
G 6+ A \$59ea



Pick up some Good Vibrations at this unforgettable celebration **dedicated to the music of The Beach Boys. For nearly 60 years, the Beach Boys have embodied summertime. Sun, surfing, the beach, pretty girls in bikinis and driving with the top down.**

Favourites like Surfin' Safari, Surfin' USA, Surfer Girl, Little Deuce Coupe, Barbara Ann and California Girls turned the warm-weather months into a blissful utopia where perpetual happiness, young love, and endless freedom reigned. Now, The Beach Boys Experience bring to the stage a mesmerising vocal wall of harmonies to capture the iconic sounds of one of the most commercially successful and critically acclaimed bands of all time. Come have some Fun, Fun, Fun at the coolest, hippest, most far-out concert this year!

FOREVER DIAMOND



WHERE PILBEAM THEATRE
WHEN SAT 22 JUNE. 7:30PM
COST A \$69.90, C \$64.90, FOT \$59.90, G 8+ \$59.90ea

This is your opportunity to experience the spontaneous display of energy and sensuality with the superb talents of internationally renowned Peter Byrne and his award-winning international production Forever Diamond.

Featuring Neil Diamond's greatest hits spanning over three decades, in an uncanny portrayal that has to be seen to be believed. Come and hear all the great hits such as – Sweet Caroline, Song Sung Blue, I Am I Said, Cherry Cherry, Beautiful Noise, Cracklin' Rosie, Crunchy Granola Suite, Holly Holy, Solitary Man & many many more.

A TASTE OF IRELAND



WHERE PILBEAM THEATRE
WHEN SUN 23 JUNE. 7:30PM
COST A \$79.90, C \$74.90, J (3-12 yrs) \$69.90, GROUP 10+ A \$74.90, FOT \$74.90

Hot off its sold out 2023 UK Tour, A Taste of Ireland The Irish Music & Dance Sensation returns with a performance that is 'Celtic for this decade'. Laugh, cry and jig into the night with a show that has entertained thousands.

Starring dancers from Lord of the Dance and Riverdance alongside a treasure trove of Irish Dancing Champions, A Taste of Ireland merges international Irish dance stars with the very best talent in the nation to deliver intricate choreography that is 100% live.

Morning Melodies

Our much loved concert series, Morning Melodies will return in 2024 with some great shows. Keep an eye on our website and Spotlight newsletter for more details.

Morning Melodies is presented by Rockhampton Regional Council. Free Morning Tea supplied from 10am

SWAN LAKE

WHERE

PILBEAM THEATRE

WHEN

TUE 25 JUNE. 7:00PM

COST

A \$61.40, C \$53.85,
G OF 10+A \$53.85ea,
J (3-12 yrs) \$53.85



Experience the timeless enchantment of a ballet masterpiece that has captivated audiences for generations. After an incredible season at Toowoomba's Empire Theatre, Toowoomba Ballet Theatre is taking Swan Lake on Tour.

Don't miss this incredible performance by some of Queensland's most talented dancers. Swan Lake tells the tale of Odette, a princess trapped in the form of a swan by an evil sorcerer's curse. Staged by Mia Huston, starring Artists of Toowoomba Ballet Theatre to Tchaikovsky's mesmerising score.

WHALEBONE SCHOOL HOLIDAY FUN!

WHERE

WALTER REID CULTURAL
CENTRE

WHEN

THUR 27 JUNE. 6:00PM
FRI 28 JUNE. 10:00AM
SAT 29 JUNE. 10:00AM

COST

\$11



Featuring dazzling video and computer animations, flying objects and a pinch of circus, this richly visual theatrical experience takes kids and adults alike on a roller-coaster ride. Whalebone is filled with eccentric contraptions, strange machinery and clunky inventions, including the world's first half-human juggling machine! Nestled in the mysterious 'Depository', meet a lone worker with a mission.

In a world where AI and machines are going rogue and making more and more decisions for us, he tries to safeguard human stories, memories and emotions.

Laugh out loud, gasp in awe, and let your imagination soar. Whalebone will ignite the curiosity of young aspiring inventors, as well as everyone who loves stories and wonders. It invites audiences to ponder the role of technology in our lives, sparking conversations about what really defines us as humans.

Patron Advice- Suitable for ages: 6-12 and families. Devised and performed by Jens Altheimer

QUEEN FOREVER – A NIGHT AT THE THEATRE



WHERE PILBEAM THEATRE
WHEN FRI 28 JUNE. 7:30PM
COST \$75

Get ready, Rockhampton! For the first time in their 17-year history, Queen Forever is bringing their spectacular A Night at the Theatre tour to the Pilbeam Theatre on Friday, June 28th, 2024.

This show is not just a musical event; it's a theatrical journey through the legendary career of Queen, one of the greatest bands of all time. Leading the charge is Gareth Hill as Freddie Mercury, whose portrayal is not just spot-on but also infused with fun, cheekiness, and humour, making him the world's most entertaining Freddie Mercury impersonator. Scott Bastian, embodying Sir Brian May, is a true student of the guitar maestro, masterfully recreating the iconic Brian May sound.

Brad Hodgkinson, as Roger Taylor, dominates the drums and captures Roger's cheeky image. Darryn McLaughlin portrays John Deacon with a solid and reliable performance, and Danny Oakhill, as the unofficial 5th member Spike Edney, impresses with his keyboard talents.

THE SUNSHINE CLUB



WHERE PILBEAM THEATRE
WHEN SAT 6 JULY. 7:30PM
COST A \$45, C \$41,
J 3-17 yrs \$30,
G 6+ A \$39,
FOT \$39, T \$39,
SS \$17

Heralded as a “brilliant new landmark in Australian musicals” (The Australian), The Sunshine Club is an award-winning musical play that tells the story of Frank Doyle, an Aboriginal serviceman who has come home from World War II to find that although the wider world may have changed, attitudes back home in Brisbane are just the same. Filled with a defiant energy and ambition for a better life, Frank starts The Sunshine Club, a place where black and white can meet and, most importantly, dance. Here he dreams of a future where he can dance in step with Rose, the girl next door, the girl of his dreams.

The Sunshine Club is written and directed by proud Noonuccal Nuugi man Wesley Enoch AM, an acclaimed creative force in Australian Theatre. This energetic and engaging musical play has a variety of music styles, with 28 songs composed by the esteemed John Rodgers.

The award-winning Sunshine Club is a thought provoking, vibrant and above all joyful night of theatre and music, featuring a talented cast of 11, including emerging and established First Nations artists, and a 5 piece live band. It is perfect for audiences seeking entertaining, socially relevant work, at a time of heightened social discourse on Indigenous Affairs.

spotlight

Presented by Rockhampton Regional Council.
Part of the 2024 See It Live Theatre Season



MARY POPPINS

WHERE

PILBEAM THEATRE

WHEN

FRI 19 JULY. 7:00 PM
SAT 20 JULY. 7:00 PM
SUN 21 JULY. 2:00 PM

COST

A \$35, C \$27, FOT \$25,
F (2 A + 2J), \$27.50ea pp,
J (2-11yrs) \$25, S \$25.00



Emmaus College performs Mary Poppins, a delightful musical based on the book series by P.L. Travers and, more notably, the 1964 musical film starring Julie Andrews and Dick Van Dyke.

The stage show features many of the original songs made famous by the Oscar-winning duo of Richard and Robert Sherman, with additional music and lyrics from George Stiles and Anthony Drewe.

Mary Poppins is the 40th Annual Musical for Emmaus College, showcasing a long and proud history of music theatre opportunities for college students over the many years.

FOURTEEN

WHERE

PILBEAM THEATRE

WHEN

WED 24 JULY. 11:00AM
WED 24 JULY. 7:30PM

COST

A \$19, J (3-17yrs) \$15



Shannon Molloy is a year 9 student at an all-boys rugby-mad Catholic school in regional Queensland, with a secret that no one can ever find out. Shannon is gay.

Based on the best-selling memoir by award-winning journalist Shannon Molloy, Fourteen is the inspirational true story of growing up gay in Central Queensland, transformed into a powerful must-see theatre production by nationally acclaimed Shake & Stir Theatre Co. Set to a nostalgic mixtape of 90s bangers from all your faves, from Shania Twain to The Spice Girls, Fourteen addresses the trials and tribulations of growing up with honesty, humour, and heart.

Patron advice: Suitable for ages 14+

School group discount applies to matinee performance.

Visit seclive.com.au for more details.

Presented by Rockhampton Regional Council.
Part of the 2024 See It Live Theatre Season



events Calendar

MAY

Until 31 May	Reid's Gallery and Gifts	WRCC
5-11	Beef 2024	RSG
3-4	Boardway and Beyond	PT
3-8	Pop Goes the Artist	WRCC
4	Pop on a Tee Shirt	WRCC
24-25	Lifeline Bookfest	WRCC
5-30	Rockhampton Eisteddfod	PT/WRCC
23	Isaac Butterfield	PT
24	Agro Up Late	PT
25	Echoes of Pink Floyd	PT

JUNE

1	RGS Music Festival	PT
2	SIX60 Grassroots Tour	PT
6-7	The Peasant Prince	PT
7	Dave O'Neil	PT
8	Australian INXS Show	PT
12-14	Rocky Show	RSG
14	Peter Williams	WRCC
15	Rockhampton Symphony Orchestra	PT
17	Morning Melodies	PT
19	Combined Schools Gala	PT
20	Beach Boys Experience	PT
22	Forever Diamond	PT
23	A Taste of Ireland	PT
25	Swan Lake	PT
27-29	Whalebone	WRCC
28	Queen Forever	PT

PT: Pilbeam Theatre WRCC: Walter Reid Cultural Centre
 RSG: Rockhampton Showgrounds HV: Heritage Village
 MB: Music Bowl O: Other Venue

SEEITLIVE.COM.AU 

The Pilbeam Theatre is owned and operated by Rockhampton Regional Council.

