

spotlight

EVENT GUIDE

SEPTEMBER - OCTOBER
2022

FEATURE EVENT

ERTH'S PREHISTORIC WORLD

20 - 21 SEPTEMBER

SEEITLIVE.COM.AU



BUYING TICKETS

The Pilbeam Theatre is located on the corner of Victoria Parade and Cambridge Street, Rockhampton.

You can buy tickets in the following ways:

At the Pilbeam Theatre Box Office | Victoria Parade entrance

By Phone | on 4927 4111

Online | www.seeitlive.com.au

FRIENDS OF THE THEATRE

If you enjoy the theatre, why not become a Friend of the Theatre? Friends of the Theatre is an organisation where members volunteer to work in various aspects of the theatre such as ushering, bar, candy bar and program selling. Friends receive discounts to many of the shows listed in Spotlight, and also receive a newsletter mailed direct to them.

Each time a Friend of the Theatre works they receive a Performance Work Voucher, which is exchanged for tickets to events. Unlimited seats are available in exchange for Performance Work Vouchers on events in Spotlight bearing the blue star symbol. For other events, voucher seats are limited to a total of six seats per performance. Further details as well as membership forms are available from the Box Office.

GENERAL INFORMATION

Theatre programs start promptly at the advertised start time and latecomers will not be admitted until a suitable break in the performance. Smoking is not allowed in any part of the Pilbeam Theatre or other Council venues.

The use of cameras and recording devices during performances is illegal and penalties for infringement of copyright in this way are severe. Please ensure all mobile phones are switched off before entering the auditorium. Crying or fidgety children can be a distraction to other theatregoers and performers, so if you bring your small child to the theatre, please book an aisle seat in case you need to exit the auditorium.

TICKETING ABBREVIATIONS

A: Adult

S: Student

J: Junior *

C: Concession

FoT: Friend of Theatre

SC: Senior's Card

P: Pensioner

G10+: Group of 10 or more

F: Family

*Preschool and school age, 3 yrs to 17 yrs. May have additional age restrictions. Please check with the Box Office to confirm eligibility for a particular price category.

THE LION KING JR

WHERE PILBEAM THEATRE

WHEN FRI 2 SEP. 7:00PM
SAT 3 SEP. 7:00PM

COST A \$30, C \$25, J \$20,
F (2A+2J) \$85, FOT \$25



Featuring students from The Rockhampton Grammar Primary School, this Broadway stage musical is brought to life by the very talented cast of RGS performers.

This production will certainly impress audiences, not only with its amazing set and costume designs but by the memorable and lovable characters it encompasses. It also features a wonderful score, a captivating story and colourful dance routines. The Lion King Jr is certain to reach out to you with its message of hope, renewal, second chances, love reunited, responsibilities fulfilled, and above all, loyalty.

LONG LUNCH: GIRLS GRAMMAR SCHOOL

WHERE ROBERT SCHWARTEN
PAVILION -
ROCKHAMPTON
SHOWGROUNDS

WHEN SAT 3 SEP.
1:00PM - 6:00PM

COST \$100pp. TO BE BOUGHT
IN TABLES OF 10



Celebrate 130 years of Rockhampton Girls Grammar School! Enjoy a delicious three course lunch catered by Olive Catering and an afternoon of entertainment by Louise James FX.

Table bookings: www.trybooking.com/CARBM

THE EMBROIDERERS GUILD

WHERE WALTER REID CULTURAL
ROOM 1.1

WHEN WED 9:00AM - 12:00PM
SAT 1:00PM - 4:00PM

COST FREE TO MEMBERS



The Embroiderers Guild meets in room 1.1 at the Walter Reid Cultural Centre on Wednesdays 9am-12pm and Saturdays 1-4pm.

The group holds regular workshops which have free tuition to members. In September, the guild will be holding a Largaterra workshop and ribbon roses in October.

Phone Rosslyn on 49288754 for more information.

event guide

THE SAPPHIRES



WHERE PILBEAM THEATRE
WHEN THU 8 SEP. 7:30PM
COST A \$52, C \$48, J \$20,
G6+A \$45ea, FOT \$45,
TEACHER \$45,
SCHOOL GROUP \$17

Written and directed by Tony Briggs. **The Sapphires** is one of Australia's best-loved stories, and winner of multiple awards for film, musical play and soundtrack album. Now, Rockhampton audiences can experience the raw energy, fun and emotion of this story live on stage.

Now, Rockhampton audiences can experience the raw energy, fun and emotion of this story live on stage. The Sapphires is the story of four young Aboriginal women who like singing country music and suddenly get the chance to change their tune and their lives. Wearing sequins, armed only with microphones they find themselves trying to spread joy in the hell that is the Vietnam War.

The Sapphires is a funny, heart-warming tale inspired by the true story of four Yorta Yorta Women, who sing classic soul hits (performed live on stage) against the backdrop of personal change and massive social upheaval. Rockhampton's own Lorinda May Merrypor plays Julie in this energetic, fun and engaging play that affirms life and the realisation of dreams.

*Presented by Rockhampton Regional Council.
Part of the 2022 See It Live Theatre Season.*



ROCKY FLIX: ROSA'S WEDDING



WHERE WALTER REID CULTURAL
CENTRE AUDITORIUM
WHEN THU 8 SEP. 7:00PM
COST A \$15, C \$13, MEMBERS \$10

Rosa, about to turn 45, combines her job as a movie seamstress with the pressure of helping her demanding family. At breaking point, she plans to symbolically marry herself, and pursue her dreams. However, many obstacles, including her family, stand in the way of her joining herself in holy matrimony and beginning to live her life.

Spanish with English subtitles. Rated M. 97 mins.

find us on facebook

Keep up to date with what is happening at the Pilbeam Theatre, see sneak peeks, previews, behind the scenes video of upcoming events and more at our Facebook page.

spotlight

www.facebook.com/pilbeamtheatre

ECHOES OF PINK FLOYD: A JOURNEY THROUGH TIME

WHERE PILBEAM THEATRE
WHEN FRI 9 SEP. 8:00PM
COST A \$75, C \$70, S \$70,
J \$45, G10+A \$70ea



Australia's largest scale Pink Floyd concept act Echoes of Pink Floyd are heading to Rockhampton with their A Journey Through Time tour.

The Adelaide-based band's latest show will take audiences on a musical and visual journey from Pink Floyd's earliest days as darlings of 1960's London's psychedelic underground, all the way to their 1990's powerhouse performances as the undisputed masters of stadium rock. In addition, the show will provide insight into the amazing evolution of the seminal English prog rockers throughout their history.

The searing, soaring music and heart-wrenching but deeply contemplative lyrics reflecting Pink Floyd's own journey as they charted their way through life's twists and turns, triumphs and disappointments. Audiences will be treated to an extensive exploration of the band's impressive catalogue as the gang from Echoes of Pink Floyd plays all of Pink Floyd's biggest smash hits, as well as some lovingly hand-picked deep album cuts designed to please the most committed of hard-core fans.

PRADA CLUTCH'S ALL DRAG REVUE

WHERE PILBEAM THEATRE
WHEN SAT 10 SEP. 8:00PM
COST A \$66, C \$61, S \$61
G10+ \$59ea, F(2A+2J) \$250



Let us take you on a journey from where it all began, Darlings! Flanked by gorgeous men, Australia's six-foot something songstress Prada Clutch & her 'girls' pay tribute to the history of Aussie drag – in concert. Revisit the good ol' days with Les Girls in the 60's, sing along to classic disco hits & sashay into today with a celebration of chart-topping music icons that have inspired drag performers around the world!

The show is headlined by Prada Clutch, one of Australia's most in demand live-singing drag queens. Prada has headlined stage shows across Australia playing both regional & capital cities. She draws her inspiration from the likes of Dusty Springfield, Patti LaBelle, Bette Midler & Cher.

This Prada Clutch performance is the rescheduled show from October 2021. If you have tickets for the postponed show/s, your tickets have been automatically transferred to the 10th of September show.

BIRDING PHOTOGRAPHY



WHERE MURRAY LAGOON
WHEN SUN 11 SEP. 7:00AM
SUN 9 OCT. 7:00AM
COST FREE ENTRY.
NO BOOKING REQUIRED

Join members of the Rockhampton Photography Club to photograph the wetland birds on Murray Lagoon, or woodland birds in the gardens. Bring a long lens and tripod as well as your camera. Meet at Murray Lagoon (turn left off Ann Street inside the gardens and drive down to the waterside).

Birding photography is one of many activities of the Rockhampton Photography Club, located at the Walter Reid Cultural Centre, Corner East and Derby Streets, Rockhampton. Open to members and non-members.

For more information on club nights and membership visit
www.rockyphotoclub.org.au

Phone Fran 0439 567 886 for further information.

THE GRUFFALO: LIVE ON STAGE!



WHERE PILBEAM THEATRE
WHEN MON 12 SEP. 6:30PM
MATINEES:
TUE 13 SEP. 10:00AM &
12:00PM MIDDAY
LIMITED PUBLIC SEATING
FOR MATINEES
COST A \$19, J \$15

Based on the award-winning picture book by Julia Donaldson & Axel Scheffler, published by Macmillan Children's Books.

A mouse took a stroll through the deep, dark woods... After sell-out seasons across the world, including London's West End & Broadway, The Gruffalo is headed to Rockhampton! Join Mouse on a daring adventure through the deep, dark wood in this magical, musical adaptation of the classic picture book by Julia Donaldson and Axel Scheffler. Searching for hazelnuts, Mouse meets the cunning Fox, the eccentric old Owl and the party mad Snake. Will the story of the terrifying Gruffalo save Mouse from ending up as dinner for these hungry woodland creatures? After all, there's no such thing as a Gruffalo – is there?

Songs, laughs and scary fun for children aged 3+ and their grown-ups.



SILENCE BY KARUL PROJECTS

WHERE PILBEAM THEATRE
WHEN THU 15 SEP. 7:30PM
COST A \$39, C \$35, G6+A \$33,
FOT \$33, TEACHER \$22,
S(HIGH SCHOOL) \$19,
SCHOOL GROUP \$17^{ea}



SILENCE is about the space in between. The conversations not being heard and the responses that are muted. Through the beating of a drum, bodies thrash through frequencies to uncover what lies in the SILENCE. There's SILENCE between the stars as the Emu travels across the night sky. There's SILENCE in the dancer's energy when they hit the cut, the rupture between rhythms and movement enabling a vibrational glitch where the spirit world can enter. It's also the deafening SILENCE under white noise. The same questions echoed through generations.

"We have marched across country. We have had promises made and promises broken. In SILENCE we pull the unresolved conversations from under the rug and slam them back on the table. Because the conversation about a TREATY will never be silenced." – Karul Projects

Age Recommendation: 12+



BEST OF THE BEE GEES

WHERE PILBEAM THEATRE
WHEN SAT 17 SEP. 7:30PM
COST A \$79, C \$69, FOT \$69,
F (2A+2J) \$158, G6+A \$64^{ea}



With Colin 'Smiley' Petersen. If you're a Bee Gees fan, this is the concert for you. The Best of the Bee Gees brings a catalogue of mega-hits and first-hand stories from original Bee Gees drummer, Colin "Smiley" Petersen, to Pilbeam Theatre in September. Drum protégé and child actor (*Smiley*, *The Scamp* and *A Cry From The Streets*), Colin was the official 4th band member and essential to the Bee Gees sound, driving the evolution of this supergroup on stage and in the studio.

He performed on four albums with the three brothers including the iconic #1 singles Massachusetts, To Love Somebody, New York Mining Disaster, I Started A Joke and so many more. The Gibb brothers' sister Lesley Evans gave the show the tick of approval when she said 'They have worked hard to reproduce the unique sound of my brothers. So tastefully done. Absolutely brilliant and I didn't want to leave.'

It would be a tragedy to miss this ultimate tribute which continues to bring global audiences to their feet so book now!

ERTH'S PREHISTORICAL WORLD



WHERE PILBEAM THEATRE

WHEN TUE 20 SEP. 6:30PM
MATINEE:
WED 21 SEP. 10:00AM

COST A \$19, J(3-17 yrs) \$15.

Two worlds. Twice the thrill. Bringing ancient creatures from land and sea together in one show, Erth's Prehistoric World is the perfect combination of theatrical magic and charm. It takes the audience to the bottom of the ocean to discover ancient bio-luminescent creatures and incredible marine reptiles, and then back to dry land to witness some of the most amazing dinosaurs to have ever walked this Earth.

Dinosaurs have become a curious link between child and parent, grandparent, guardian and educator. The learning opportunities are immense. Experience the creatures of your imagination coming to life on stage in this enthralling new show!

It's in the school holidays so bring the whole family! Recommended for children 5+

Written and directed by Erth Visual & Physical Inc.

Presented by Rockhampton Regional Council.

Part of the 2022 See It Live Theatre Season.



ROCKHAMPTON DANCE FESTIVAL



WHERE PILBEAM THEATRE

WHEN THU 22 SEP. - WED 28 SEP.
SESSIONS: 9:00AM,
1:00PM, 5:00PM

COST TBC

Come celebrate with us at the annual Rockhampton Dance Festival in the September school holidays. The competition will run from Thursday 22 to Wednesday 28 September.

Everyone entering the theatre during the Festival must have a ticket (including competitors). Programs are on sale through the Rockhampton Dance Festival website.

Season and session tickets are available from the Pilbeam Theatre Box Office. Three sessions daily. Please check official program for precise details.

SPEEDWAY

WHERE

ROCKHAMPTON
SHOWGROUNDS

WHEN

SAT 24 SEP. 4:00PM

COST

A \$25, C \$20, J FREE (U12)



Rockhampton Speedway is a family friendly event full of action packed dirt flying entertainment, with facilities to suit everyone it is sure to impress.

Local food vendors and Rotary providing great meals and the bar serving ice colds drinks you can't go wrong at speedway. The speedway is Rocky's best value family night out.

EXHIBITION: LEAD ME TO THE RIVER

WHERE

WALTER REID
CULTURAL CENTRE
FRONT GALLERY,
GROUND FLOOR &
CQCA STUDIO 4,
FIRST FLOOR

WHEN

FRI 30 SEP. - TUE 11 OCT.

COST

FREE ENTRY



Central Queensland Contemporary Artists will hold an exhibition in September / October titled Lead Me to the River.

It's a celebration of the Fitzroy River (Tunuba) as a water course, wetland and ecosystem which sustains a diverse range of flora and fauna.

BROMELIAD & TILLANDSIA SALE

WHERE

ROBERT SCHWARTEN
PAVILION -
ROCKHAMPTON
SHOWGROUNDS

WHEN

SAT 1 OCT. 8:00AM - 2:00PM
SUN 2 OCT. 9:00AM - 12:00PM

COST

GOLD COIN ENTRY



The Rockhampton Bromeliad Group is holding its 2022 sale with both local and visiting sellers.

Come and gain advice and information about these unique plants from our sellers and guest speakers. Food & drinks available to purchase, raffles & lucky door prizes. If you are only starting your collection or have been collecting for years, don't miss out on this wonderful annual event.

event guide

pg. 9

MANHATTAN SHORT



WHERE WALTER REID CULTURAL
CENTRE AUDITORIUM

WHEN SAT 1 OCT.
2:00PM & 7:00PM

COST A \$20, C \$15

The 25th Annual Manhattan Short Film Festival will give patrons a chance to view and vote on short films from around the world. Licensed bar will be in operation.

Phone 0417 077 348 for all enquiries.

DIWALI



WHERE PILBEAM THEATRE

WHEN SAT 1 OCT. 5:00PM

COST A \$30, C \$25, S \$18,
F(3) \$52.50, F(4) \$70

The Indian Association of Central Queensland cordially invites you to join the spectacular and bedazzling festival of Deepavali (meaning rows of lighted lamps) commonly known as Diwali – The Festival of Lights. It is celebrated by millions of people all over the world!

Enjoy The Grand Diwali celebrations with plenty of vibrant cultural performances. This festival is not just about deity worship, firecrackers, sweets and holidays, rather it provides one and all, a firm message of the triumph of light over darkness. It's a festival of joy, splendour, unity, brotherhood and will be celebrated with great enthusiasm.

FAIRYTALES ON ICE



WHERE PILBEAM THEATRE

WHEN SUN 2 OCT. 7:00PM

COST ROYAL VIP \$89.90,
PLATINUM \$69.90,
GOLD \$57.90, SILVER \$42.90
FAMILY TICKETS AVAILABLE

Direct from its sellout tour in the US, the ice skating spectacular Fairytales on Ice is coming to Rockhampton in October. Delight in the spectacular as award-winning skaters bring your favourite fairy tale characters to life through ice skating, singing, and music! Featuring stories and characters from The Little Mermaid & The Pirate Adventures, Cinderella, Alice in Wonderland, Little Red Riding Hood, and more!

Follow the ice skating magic as swashbuckling pirates embark on an underwater adventure and let these well-known characters lift you high into another world. Performers glide effortlessly across the floor in a hold-your-breath experience you won't want to miss.

spotlight

SWAN LAKE

WHERE PILBEAM THEATRE
WHEN THU 6 OCT. 7:30PM
COST A \$105, C \$95, J(1-17 yrs) \$65, F (2A + 2C) \$300, G8+ \$95ea, FOT \$95



The Royal Czech Ballet will visit Australia for the first time with Swan Lake. The most loved classical ballet of them all. This masterpiece ballet is presented in two acts and follows the original storyline with traditional choreographic revisions by Marius Pepita.

Swan Lake is the love story of Prince Siegfried who falls in love with Odette. Odette is under a spell, where she is a swan by day, who turns into a woman at night. The spell can only be broken by a man who will pledge his love forever. It is a story where the virtues of love and forgiveness in the end conquer evil and betrayal. The Royal Czech Ballet features elite dancers from the European countries of France, Italy, Moldova and Ukraine.

COAL MINER'S DAUGHTER

WHERE PILBEAM THEATRE
WHEN FRI 7 OCT. 7:30PM
COST ALL TICKETS \$79.90



Multi awarded, look alike songstress, Amber Joy Poulton, leads this sensational production filled with traditional and contemporary hits and stories of inspirational pioneer and superstar Loretta Lynn.

Weaving anecdotes and comedy through a traditional and contemporary catalogue of hits, including Coal Miner's Daughter, Don't Come Home A'Drinkin' With Lovin' On Your Mind, I Fall To Pieces, You Ain't Woman Enough To Take My Man, Crazy, Silver Threads and Golden Needles, Walkin' After Midnight, You're Lookin' At Country, One's On The Way, Stand By Your Man, After The Fire Is Gone and more, this is a show not to be missed!

Coal Miner's Daughter includes 'friends' Lizzie Moore as Patsy Cline and Denis Surmon as Conway Twitty accompanied by The Holy Men, in this sensational musical tribute to three legends.

review us

Attended one of our events and loved it?
Leave us a review on TripAdvisor!



event guide

BJORN AGAIN



WHERE PILBEAM THEATRE
WHEN SAT 8 OCT. 8:00PM
COST A \$69, C \$65, S \$65,
G8+A \$65^{ea}

Dust off those flares, platform shoes and satins and get ready to sing, dance and have the time of your life on Bjorn Again's Mamma Mia! We Are Back Again! 2022 Australian Tour

Bjorn Again are so excited to be back playing all of ABBA's biggest hits in an action-packed, highly-entertaining concert that is ABBA-SOLUTE fun for the whole family. They performed over 7000 shows in over 120 countries world-wide. They're endorsed by the members of ABBA and regarded as the most successful tribute show of all time. Their critically acclaimed shows have been attended by JK Rowling, Tom Jones, Dave Grohl and Paul Kelly, Metallica, Robert Plant, Bill Gates and Nirvana just to name a few. Send out an SOS, RING Fernando and Chiquitita and TAKE A CHANCE on Bjorn Again's Mamma Mia! We Are Back Again!

BARD AWARDS



WHERE PILBEAM THEATRE
WHEN SUN 9 OCT.
COST \$5pp. PER SESSION.
FREE ENTRY FOR
COMPETITORS

The Bard Awards is a competition for school students to perform an excerpt of a published dramatic work, in monologue, duologue and group scene categories. Entrants receive professional advice and assistance along the way.

While Shakespeare is known as 'the Bard', the Bard Awards uses a broader definition of the term, 'a story teller'. Competitors can perform a traditional or contemporary published work by any author, not just Shakespeare.

Entries close 23 September. More information and public tickets will be available from www.secitlive.com.au/Bard2022

ROCKY FLIX: THE GOOD BOSS



WHERE WALTER REID CULTURAL
CENTRE AUDITORIUM
WHEN THU 13 OCT. 7:00PM
COST A \$15, C \$13, MEMBERS \$10

The Good Boss is a kind, benevolent boss, who is forced to make difficult decisions for the good of one and all. It's nothing personal, merely the result of a bleak economic climate. The true conjuring trick is to convince the sacked employees to feel the same way.

Spanish with English Subtitles. Rated M 120 mins.

spotlight

MENOPAUSE THE MUSICAL

WHERE PILBEAM THEATRE
WHEN THU 13 OCT. 7:30PM
COST ALL TICKETS \$69.90



Celebrating its 21st anniversary, the original New York and Las Vegas Hit Menopause The Musical® is coming to the Pilbeam Theatre!

Four women at a lingerie sale have nothing in common but a black lace bra, memory loss, hot flushes, night sweats, not enough sex, too much sex and more. Inspired by a hot flush and a bottle of wine, Menopause The Musical® is a celebration for women who are on the brink of, in the middle of, or have survived "The Change". This sidesplitting musical parody set to classic tunes from the 60's, 70's and 80's will have you cheering and dancing in the aisles!

See what millions of women (and brave men) have been laughing about for 20 years. It's the Hilarious Celebration of Women and The Change!®

Recommended 15+. Contains menopausal themes and sexual references.

LOST & FOUND FESTIVAL

WHERE ROCKHAMPTON SHOWGROUNDS
WHEN SAT 15 OCT.
COST TICKETS FROM \$99



Rockhampton is set to bounce! After a sell-out Townsville event, Lost & Found Festival expands, taking place in Rockhampton. The show will feature some of the biggest names in Australian EDM & Hip Hop!

The stacked line-up boasts performances from platinum selling hip hop artist Chillinit, hip hop international sensation Masked Wolf, international superstars Stafford Brothers, Bonka, Brooklyn, Dave Winnel, Day1, Jordan Burns, DJ Nino Brown, Timomatic, Wa-Fu and much more.

Tickets for the Lost & Found Festival are on sale from [oztix.com.au](https://www.oztix.com.au).

LEGALLY BLONDE

WHERE PILBEAM THEATRE
WHEN SAT 15 OCT. 7:30PM
SUN 16 OCT. 2:00PM
COST A \$69.90, C \$64.90,
G6+A \$64.90

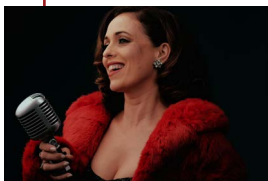


Omigod you guys! From the company who brought you Rock of Ages and Priscilla, Mad About Theatre is back in 2022 and taking over The Pilbeam in a pink storm!

A fabulously fun award-winning musical based on the much adored movie, Legally Blonde The Musical, follows the transformation of Elle Woods as she tackles stereotypes and scandal in pursuit of her dreams. Action-packed and exploding with memorable songs and dynamic dances - this musical is so much fun, it should be illegal!

event guide

MORNING MELODIES: 1954 ELLA ETTA & EARTHA



WHERE PILBEAM THEATRE
WHEN MON 17 OCT. 11:00AM
COST A \$20, C \$18, G6+ \$17,
FOT \$17

It's the year 1954. Ella Fitzgerald, Etta James and Eartha Kitt are all at the dizzy heights of their careers. With swinging jazz, powerful soul and cheeky kitsch these three women broke new ground for all who followed after. Melissa Western and her world class band pay tribute to this magnificent era in music and inspiring trio of pioneering singers. 50's style abounds.

Produced by Western Standard Productions.

Tour supported by the Playing Queensland Fund, an initiative of the Queensland Government through Arts Queensland.

Morning Melodies is presented by
Rockhampton Regional Council

Free Morning Tea supplied by Brumby's
Allenstown / Gracemere / Parkhurst.



MULTICULTURAL COMEDY GALA



WHERE PILBEAM THEATRE
WHEN THU 20 OCT. 8:00PM
COST A \$59.90, C \$54.90,
G8+A \$49.90 ea

The Multicultural Comedy Gala is a night celebrating cultural diversity with a superb line-up of some of the country's best stand-up comedians. Join Australia's favourite and emerging comedic talent as they touch on cultural identity in a concoction of comedy that pokes fun at what makes us all different but very much the same.

The star-studded line-up includes Dilruk Jayasinha, Urvi Majumdar, Akmal, Steph Tisdell and Ting Lim in a hilarious celebration of Australia's multicultural diversity. So, do your soul a favour and treat it to a night of laughter you'll never forget. You probably need it.

Age Restriction: 15+ Warnings: Contains adult themes, coarse language, sexual references, drug references

THE LITTLE MERMAID

WHERE PILBEAM THEATRE

WHEN FRI 28 OCT. 7:00PM
SAT 29 OCT. 7:00PM
SUN 30 OCT. 2:00PM

COST A \$45, C \$33, J(2-11yrs) \$27
J(12-17yrs) \$33, FOT \$33,
F(2A+2J) \$130



The Rockhampton Musical Union Youth Choir are proud to bring you their 2022 production of Disney The Little Mermaid. The RMUYC has a proud history of providing singing and performance opportunities to the talented young people of Central Queensland, aged 8 to 18 years.

In The Little Mermaid, Ariel, King Triton's youngest daughter, wishes to pursue the human Prince Eric in the world above, bargaining with the evil sea witch, Ursula, to trade her tail for legs. But the bargain is not what it seems, and Ariel needs the help of her colourful friends to restore order under the sea.

Join Ariel, Flounder, Scuttle, Sebastian and all their friends for three fantastic shows on the 28th, 29th and 30th October this year.

ROCKHAMPTON BRICK EVENT

WHERE ROBERT SCHWARTEN
PAVILION

WHEN SAT 29 OCT. & SUN 30 OCT.
9:00AM - 3:00PM

COST A \$14.50, J \$9.50, F \$53



The Rockhampton Brick Event is set to showcase the LEGO creations of many talented brick builders who will be exhibiting custom creations built entirely from LEGO. All your favourite themes will be covered, including City (with working trains), Star Wars, Harry Potter and Friends. And no, none of it is glued!

After being inspired by the incredible creations on display, you can let your imagination run wild on our play tables, or on our ever-popular build walls.

friends of theatre

If you enjoy the theatre, then why not become a member of Friends of the Theatre?

Friends of the Theatre is a group of people who want to be part of the exciting world of live theatre. Friends lend a hand by volunteering to work in the bar, candy bar, program selling and ushering areas. But it's not all work and no play. Friends who volunteer to work also receive vouchers which can be redeemed for tickets to shows (depending on availability).

For more information, contact the Pilbeam Theatre Box Office on 4927 4111 or visit www.secitlive.com.au

events calendar

SEPTEMBER

2-3	The Lion King Jr	PT
3	Girls Grammar Long Lunch	RSG
8	The Sapphires	PT
8	Rocky Flix	WRCC
9	Echoes of Pink Floyd	PT
10	Prada Clutch's All Drag Revue	PT
11	Birding Photography	O
12-13	The Gruffalo Live on Stage	PT
15	SILENCE	PT
17	Best of the Bee Gees	PT
20-21	Erth's Prehistoric World	PT
22-28	Rockhampton Dance Festival	PT
24	Speedway	RSG
30-11 Oct	Exhibition: Lead Me to the River	WRCC

OCTOBER

1-2	Bromeliad and Tillandsia Sale	RSG
1	Manhattan Short Film Festival	WRCC
1	Diwali	PT
2	Fairytales on Ice	PT
6	Swan Lake	PT
7	Coal Miner's Daughter	PT
8	Bjorn Again	PT
9	Birding Photography	O
9	The Bard Awards	PT
13	Menopause the Musical	PT
13	Rocky Flix	WRCC
15	Lost & Found Festival	RSG
15-16	Legally Blonde	PT
17	Morning Melodies	PT
20	Multicultural Comedy Gala	PT
28-30	Disney The Little Mermaid	PT
29-30	Rockhampton Brick Event	RSG

PT: Pilbeam Theatre

WRCC: Walter Reid Cultural Centre

RSG: Rockhampton Showgrounds

HV: Heritage Village

MB: Music Bowl

O: Other Venue

SEEITLIVE.COM.AU 

The Pilbeam Theatre is owned and operated by Rockhampton Regional Council.

