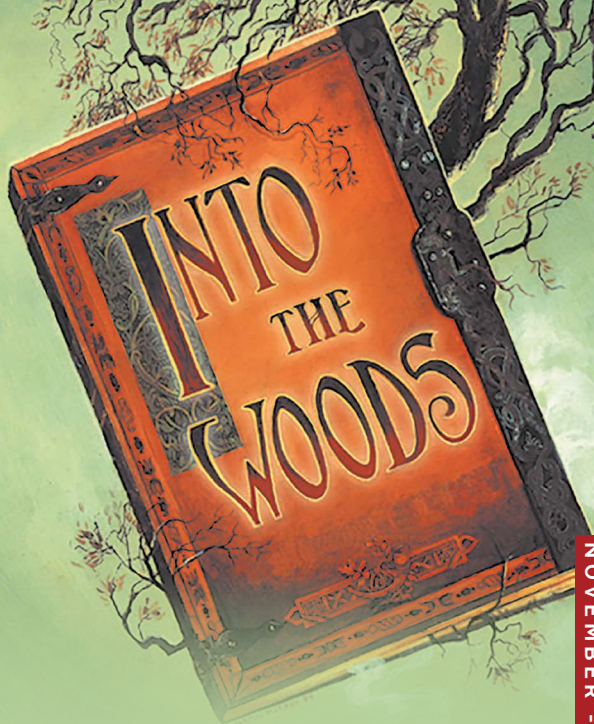


spotlight

EVENT GUIDE



NOVEMBER - FEBRUARY
2022 - 2023

FEATURE EVENT

INTO THE WOODS

17-25 MARCH

SEEITLIVE.COM.AU



BUYING TICKETS

The Pilbeam Theatre is located on the corner of Victoria Parade and Cambridge Street, Rockhampton.

You can buy tickets in the following ways:

At the Pilbeam Theatre Box Office | Victoria Parade entrance

By Phone | on 4927 4111

Online | www.seeitlive.com.au

FRIENDS OF THE THEATRE

If you enjoy the theatre, why not become a Friend of the Theatre? Friends of the Theatre is an organisation where members volunteer to work in various aspects of the theatre such as ushering, bar, candy bar and program selling. Friends receive discounts to many of the shows listed in Spotlight, and also receive a newsletter mailed direct to them.

Each time a Friend of the Theatre works they receive a Performance Work Voucher, which is exchanged for tickets to events. Unlimited seats are available in exchange for Performance Work Vouchers on events in Spotlight bearing the blue star symbol. For other events, voucher seats are limited to a total of six seats per performance. Further details as well as membership forms are available from the Box Office.

GENERAL INFORMATION

Theatre programs start promptly at the advertised start time and latecomers will not be admitted until a suitable break in the performance. Smoking is not allowed in any part of the Pilbeam Theatre or other Council venues.

The use of cameras and recording devices during performances is illegal and penalties for infringement of copyright in this way are severe. Please ensure all mobile phones are switched off before entering the auditorium. Crying or fidgety children can be a distraction to other theatregoers and performers, so if you bring your small child to the theatre, please book an aisle seat in case you need to exit the auditorium.

TICKETING ABBREVIATIONS

A: Adult	S: Student	J: Junior *
C: Concession	FoT: Friend of Theatre	SC: Senior's Card
P: Pensioner	G10+: Group of 10 or more	F: Family

*Preschool and school age, 3 yrs to 17 yrs. May have additional age restrictions. Please check with the Box Office to confirm eligibility for a particular price category.

Rocky Flix is a small independent film group presenting monthly screenings at the Walter Reid Cultural Centre Auditorium. More info: www.facebook.com/rockyflixinc

WHERE | Walter Reid Cultural Centre Auditorium

WHEN | Monthly

COST | A \$15, C \$13, Members \$10

BROADWAY & BEYOND

WHERE PILBEAM THEATRE

WHEN FRI 4 NOV. 7:30PM
SAT 5 NOV. 7:30PM

COST A \$55, C \$45,
J (3-11 YRS) \$35



Featuring over 20 of the region's finest singers, dancers and musicians, Broadway & Beyond is a celebration of musical theatre, cabaret, rock, pop and jazz; a 2-hour high energy live show of dazzling song and dance!

Broadway & Beyond has become one of the most anticipated & fast growing annual local productions in Central Queensland and is now back with a brand new show in November. This year's performers include the vocal talents of Angelo Conway, Amanda Hock, Claire Janes, Brad Villiers, Jacob Goves, Maddi McDonald & Lachlan Scheuber along with musicians from the band of Rockhampton Regional Council's productions of Jersey Boys, Mamma Mia, Kinky Boots & We Will Rock You, plus an ensemble of some the region's most experienced dancers.

JANE EYRE

WHERE PILBEAM THEATRE

WHEN TUE 8 NOV. 7:30PM

COST A \$52, C \$48,
J (3-17 yrs) \$20,
G6+A \$45ea, FOT \$45,
TEACHER W/ GROUP \$45,
SCHOOL GROUP \$17ea



Brontë's gothic tale of a spirited orphan in search of love, family and a sense of belonging, blazes into the Pilbeam Theatre. Witness one of the most iconic pieces of English literature retold in a faithful yet fiercely original new stage adaptation from the nationally renowned shake & stir theatre co (Animal Farm, Dracula).

Following a childhood spent suffering at the hands of her cruel Aunt, Jane finds employment at Thornfield Hall – the impressive yet mysterious home of Edward Rochester. As Jane and Rochester become inexplicably drawn to each other, the dark secrets locked within the walls of Thornfield start to unravel. This stunning new production, featuring original music, written and performed live on stage by multi ARIA Award winner Sarah McLeod, (The Superjesus), will set a fire blazing in your soul.

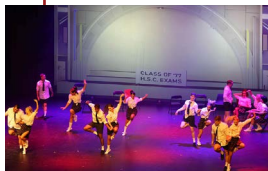
*Presented by Rockhampton Regional Council.
Part of the 2022 See It Live Theatre Season.*



event guide

pg. 3

CLOUDLAND THE MUSICAL



WHERE PILBEAM THEATRE
WHEN FRI 11 NOV. 7:30PM
COST A \$89.50, C \$79.50,
J (12-17 yrs) \$69.50,
G8+A \$79.50, AFOT \$84.90
PFOT \$74.90

The overnight demolition of Brisbane's Cloudland Ballroom in 1982 stunned not only the local residents, but people from all corners of the globe who had attended the venue during its lifetime. The culmination of a decade of research and development, Cloudland the Musical is a story filled with drama and controversy.

If there was ever a musical to be written based on real events, this is it. After all, Cloudland played host to many of the music icons that other musicals have been written about! With a stunning cast of world-class singers, actors, musicians Cloudland the Musical comprises of a blend of original compositions and carefully selected works from iconic Australian and international artists that played at the venue. Featuring the music of: The Bee Gees, Buddy Holly, The Angels, Jerry Lee Lewis, Cold Chisel, Johnny O'Keefe, Midnight Oil, Australian Crawl, Normie Rowe, Mental as Anything, Bill Haley, Split Enz and more.

Auditions - Into the Woods

Rockhampton Regional Council's 2023 production is the award winning Stephen Sondheim musical, Into the Woods. One of Sondheim's most popular works, Into the Woods comically intertwines the plots of several popular fairytales, and explores the consequences of the characters' wishes and quests. Into the Woods is a musically sophisticated show with the opportunity to feature actors adept at dark comedy.

Auditions will be held in November. For more info and to book an audition time: www.secitlive.com.au/audition

review us

Attended one of our events and loved it?
Leave us a review on TripAdvisor!



IT JUST STOPPED

WHERE WALTER REID CULTURAL
CENTRE AUDITORIUM

WHEN FRI 11 NOV. 7:30PM
SAT 12 NOV. 7:30PM
FRI 18 NOV. 7:30PM
SAT 19 NOV. 7:30PM

COST A \$27, C \$22, J \$17



Rockhampton Little Theatre performs 'It Just Stopped', by Stephen Sewell. Beth and Franklin live a comfortable life in their penthouse apartment. She is a radio producer, he's a writer for the New York Review of Books. Their world is plunged into confusion when all the modern conveniences they assume will always be there, all of a sudden just stop!

They finally think they are saved when Bill and Pearl show up to make them an offer that they can't quite believe, but things start to unravel quickly. A savage comedy of manners, 'It Just Stopped' explores our relationship to art, globalisation, death, technology, America, Campari, cardboard boxes and slavery. Contains coarse language.

MUSICAL MASTERPIECES

WHERE PILBEAM THEATRE

WHEN SAT 12 NOV. 7:30PM

COST A \$49, C \$45,
G8+ \$45, PAY YOUR AGE
(26 & UNDER)



The Capricornian presents Rockhampton Symphony Orchestra (RSO) in Musical Masterpieces including Sabre Dance, Night on Bald Mountain, Czardas, Tchaikovsky 4th Symphony Finale and more.

RSO Conductor Owen Clarke brings to CQ audiences an exciting orchestral program which will feature soloists Lynn Byun (violin), Sian Davis and Angela Richmond (clarinet) plus a spectacular finale from Respighi's Pines of Rome. Audiences will be mesmerised by Barber's magical Adagio for Strings and uplifted by Borodin's Polovtsian Dances.

REID'S GALLERY AND GIFTS

WHERE WALTER REID CULTURAL
CENTRE (CNR EAST &
DERBY STREETS)

WHEN MON 14 NOV. - FRI 24 DEC.
MON - SAT: 10AM - 3PM



Attention all discerning buyers! If you would like to purchase a special handmade gift for that special person, secret Santa, next door neighbour, teacher or pamper yourself with a beautifully hand crafted gift, Reid's Gallery and Gifts will be opening on Monday 14 November and closing 3pm on Saturday 24 December.

event guide

GIRLS ROCK



WHERE PILBEAM THEATRE
WHEN WED 16 NOV.
COST TBA

Girls Rock is an annual showcase of the amazing talent of our Girls Grammar Girls. With a night of singing, dancing, music, drama and the battle of staff versus seniors for best performance of the night, it is one of the biggest highlights for the school year!

All year levels from Prep to Year 12 are invited and eligible to audition and perform. Students, staff, parents, friends and community are all invited to see just how much our Girls Rock!

THE WIGGLES



WHERE PILBEAM THEATRE
WHEN MON 21 NOV.
10:00 AM & 12:30 PM
COST ALL TICKETS \$39.90
G8 \$37.90 ea

It's time to Wiggle! Experience the magic of The Wiggles' brand-new 'The Wiggles Holiday Party Big Show Tour' to Rockhampton in November.

Come along and join in the fun of this festive season, in what will be The Wiggles' most exciting show yet!

friends of theatre

If you enjoy the theatre, then why not become a member of Friends of the Theatre?

Friends of the Theatre is a group of people who want to be part of the exciting world of live theatre. Friends lend a hand by volunteering to work in the bar, candy bar, program selling and ushering areas. But it's not all work and no play. Friends who volunteer to work also receive vouchers which can be redeemed for tickets to shows (depending on availability).

For more information, contact the Pilbeam Theatre Box Office on 4927 4111 or visit www.seeitlive.com.au

DEBBIE'S DANCE STUDIO

WHERE

PILBEAM THEATRE

WHEN

SAT 26 NOV.

JUNIOR CONCERT: 10:00AM,

SENIOR CONCERT: 2:00PM

COST

SINGLE CONCERT:

A \$27, C \$23, S \$23, J \$19,

F(2A+2J) \$84

BOTH CONCERTS:

A \$49, C \$41, F \$156,

S \$41, J \$33



Debbie's Dance Studio's 19th annual concert will showcase over 300 dance students and cheerleaders in two high energy concerts. The studio has always had the motto of 'putting the fun back in dance' and this will definitely come through as students perform an exciting variety of dance pieces in styles including modern dance, hip hop, contemporary and cheerleading.

There will be two concerts, audiences can choose from either the junior concert, featuring performers aged 3 to 14 years or the senior concert, featuring performers aged 10 years and above.

PRACTICALLY PERFECT... THE DANCE STAR WAY!

WHERE

PILBEAM THEATRE

WHEN

SUN 27 NOV. 2:30PM

COST

A \$40, C \$30, S \$30,

J (3-11 yrs) \$25, F(2A+2J) \$120



Practically Perfect... The Dance Star Way! is an afternoon of fun and entertainment presented to you by the students of Dance Star Studio.

Act 1 will be a dance musical to Mary Poppins with all of your favourite characters. The musical will be exciting and magical and will have a few surprises for you! Act 2 will include a variety of group dances featuring all Dance Star students ranging from 3 years of age to our adults. All items have been choreographed for the afternoon's performance and the items will range from jazz, tap, ballet, contemporary, acrodance and musical theatre.

NUTCRACKER & SWEET DELIGHTS



WHERE PILBEAM THEATRE
WHEN SUN 4 DEC.
COST A \$35, C \$30, J \$25,
F(2A+2J) \$110

Capricorn School of Dancing performs 'The Nutcracker and A Selection of Sweet Delights'. Enter the dream of a young girl, be enchanted by a world of dance featuring mice, toys and the delectable land of sweets that create magic for every imagination.

The Nutcracker has long been one of the most delightful ways to discover the beauty of ballet and makes for a sparkling festive treat for the whole family. There will also be a showcase of the school's award-winning performance group items including a specially choreographed opening from Moulin Rouge. From the poise and grace of beautiful ballet ensembles and innovative contemporary dance works to the energetic world of jazz, tap and musical theatre this show will be a delight to an audience of all ages.

MAYOR'S CAROLS BY CANDLELIGHT



WHERE PILBEAM THEATRE
WHEN WED 7 DEC. 7:00PM
MUSIC BOWL:
SAT 10 DEC. 7:00PM
COST A \$12, C \$8
MUSIC BOWL:
ENTRY - DONATION

The Mayor's Carols by Candlelight concerts – one at the Pilbeam Theatre and a second at the Music Bowl – bring thousands of Central Queenslanders together to celebrate Christmas. Featuring local performers and musicians, the concerts are filled with joyful Christmas songs and Christmas carols, and there is plenty of opportunity for audience members to sing along.

Proceeds from ticket prices and donations at the events go to this year's nominated local charity. For the comfort of indoors, be at the Pilbeam Theatre on Wednesday 7 December at 7pm. This is a ticketed event, with tickets on sale from the Pilbeam Theatre www.secitlive.com.au

If you prefer the traditional outdoor event, the Music Bowl is the venue on Saturday 10 December. Concert starts at 7pm, gates open 5pm, with markets and food stalls. Entry to the Music Bowl concert is by donation to this year's charity.

MORNING MELODIES: DARREN COGGAN

WHERE PILBEAM THEATRE
WHEN MON 12 DEC. 11:00AM
COST A \$20, P \$18, G6+ \$17,
FOT \$17



Home For Christmas is a fun and engaging performance full of laughter and sing-along songs that promises to be the gift of the season. As his thoughts turn to home, strumming a guitar, Darren Coggan reimagines much loved Christmas favourites, reminiscing warm childhood memories of family and friends. However you celebrate the Christmas season, whether with a fond memory of a loved one, a longing for someone far away or in the company of family and friends, may you find peace and indeed be Home For Christmas.

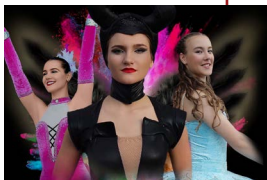
Darren Coggan is one of Australia's most exciting and diverse artists, a masterful storyteller with a knack of weaving fascinating and perceptive tales through his songs. From humble beginnings, strumming a guitar by 'the 'Bidgee' river in his beloved hometown of Wagga Wagga, to selling out The Sydney Opera House Concert Hall with Peace Train The Cat Stevens Story.

Morning Melodies is presented by
Rockhampton Regional Council
Free Morning Tea supplied by Brumby's
Allenstown / Gracemere / Parkhurst.



ONCE UPON A TIME

WHERE PILBEAM THEATRE
WHEN SUN 18 DEC. 3:00PM
COST A \$40, C \$30,
J (3-11 yrs) \$25,
S (SECONDARY) \$30,
F (2A+2J) \$120



Rockhampton Academy of Dancing brings you their 2022 end of year concert, Once Upon a Time, a magical story full of enchantment and beauty, with characters from Maleficent and Sleeping Beauty. The concert showcases 50 of the school's talented students aged 2 to 18 years.

The concert also includes 'It's Showtime', which showcases some of the school's award-winning 2022 competition groups with group performances such as Charlie and The Chocolate Factory and Moulin Rouge and new groups incorporating acrobatics, tap dance, cabaret, jazz, hip hop and much more. It's an afternoon of dance and entertainment for the whole family to enjoy.

Christmas closure

The Pilbeam Theatre Box Office and Major Venues Administration office will be closed from Friday 23 December at 3pm, reopening on Tuesday 3 January.

We would like to wish all our customers a Merry Christmas and a Happy New year, and we hope to see you at the theatre in 2023.



EMBROIDERY WORKSHOP



WHERE WALTER REID CULTURAL CENTRE ROOM 1.1
WHEN FIRST 2 WEEKS IN FEB

Learn how to create an embroidered book cover featuring a lace collage surrounding a fabric image.

For more information, please contact Marilyn Bloxsom 0407 286 522.

REBEL REBEL



WHERE PILBEAM THEATRE
WHEN FRI 17 FEB. 7:30PM
COST A \$69, C \$63, G10+ \$63, FOT \$63

The Bowie Anthology is a captivating live concert recreating the iconic sound of David Bowie. This live rock performance set in a rockumentary format tells the story of David Bowie's life and music, from his 1969 release *Space Oddity* to his last album *Blackstar*.

The show features vocalist Whalen Hughes together with an outstanding live band and a visually spectacular stage show. Performing all of Bowie's classic hits including *Starman*, *The Man Who Sold the World*, *Space Oddity*, *Changes*, *Ashes To Ashes*, *Ziggy Stardust*, *Golden Years*, *Fame*, *Fashion*, *Life On Mars*, *Let's Dance*, *China Girl*, plus many many more. This is a concert not to be missed.

MORNING MELODIES: DAVID SCHEEL

WHERE PILBEAM THEATRE

WHEN MON 20 FEB. 11:00AM

COST A \$20, P \$18, G6+ \$17,
FOT \$17



Our first Morning Melodies for 2023 is David Scheel performing **Don't Shoot me I'm only the Piano Player**.

Internationally regarded as one of the finest solo musical comedy performers in the world, David Scheel became a household name in the UK not only for his musicianship but also for his send ups of the ridiculous. The Adelaide born entertainer tasted his first international success on London's West End in the satirical show News Revue, but it wasn't long before he became a regular on British TV and radio.

In Don't Shoot Me, I'm only the Piano Player you can expect to hear anything from a well-known folk tune played in the styles of various famous composers, 2 different pieces played with different hands at the same time, and a medley of the 20 worst tunes ever written. His raconteur-style send-ups of the ridiculous include true stories of bad pianos he's had to play, sharp-edged commentary on the celeb lives of the Kardashians, Meghan & Harry & Co., and equally topical digs at politicians. His hilarious translation of the lyrics of Waltzing Matilda is already an established comedy classic, and it's set to be joined by his latest offering: Everything You Need to Know to Survive a Pandemic.

Morning Melodies is presented by
Rockhampton Regional Council

Free Morning Tea supplied by Brumby's
Allenstown / Gracemere / Parkhurst.



2023 MUSICAL

WHERE PILBEAM THEATRE

WHEN FRI 17 MAR. - SAT 25 MAR.

COST TICKETS ON SALE SOON



Rockhampton Regional Council's 2023 production is Tony-award winning **Stephen Sondheim musical, Into the Woods**.

One of Sondheim's most popular works, Into the Woods comically intertwines the plots of several popular fairytales, and explores the consequences of the characters' wishes and quests. Is happily ever after really 'happily ever after'? Be careful what you wish for!

events calendar

NOVEMBER

4-5	Broadway & Beyond	PT
8	Jane Eyre	PT
11	Cloudland The Musical	PT
11, 12, 18, 19	It just Stopped	WRCC
12	Musical Masterpieces	PT
14-24 Dec	Reid's Gallery and Gifts	WRCC
16	Girls Rock	PT
21	The Wiggles	PT
26	Debbie's Dance Concert	PT
27	Practically Perfect... The Dance Star Way!	PT

DECEMBER

3	Epic Studios Ei8ht	PT
4	The Nutcracker & Selection of Sweet Delights	PT
7	Mayor's Carols by Candlelight	PT
10	Mayor's Carols by Candlelight	MB
12	Morning Melodies - Daren Coggan	PT
18	Once Upon A Time	PT

FEBRUARY

17	Rebel Rebel	PT
20	Morning Melodies - David Scheel Embroidery Workshop	PT WRCC

PT: Pilbeam Theatre **WRCC:** Walter Reid Cultural Centre
RSG: Rockhampton Showgrounds **HV:** Heritage Village
MB: Music Bowl **O:** Other Venue

SEEITLIVE.COM.AU 

The Pilbeam Theatre is owned and operated
by Rockhampton Regional Council.

