

# spotlight

EVENT GUIDE



MAY - JUNE  
2022

**FEATURE EVENT**

SYDNEY DANCE COMPANY

25 JUNE 2022

[SEEITLIVE.COM.AU](http://SEEITLIVE.COM.AU)



# buy your tickets

**AT THE BOX OFFICE** | Pilbeam Theatre Box Office

**BY PHONE** | 4927 4111

**ONLINE** | [www.seeitlive.com.au](http://www.seeitlive.com.au)

## FRIENDS OF THE THEATRE

If you enjoy the theatre, why not become a Friend of the Theatre? Friends of the Theatre is an organisation where members volunteer to work in various aspects of the theatre such as ushering, bar, candy bar and program selling. Friends receive discounts to many of the shows listed in Spotlight, and also receive a newsletter mailed direct to them.

Each time a Friend of the Theatre works they receive a Performance Work Voucher, which is exchanged for tickets to events. Unlimited seats are available in exchange for Performance Work Vouchers on events in Spotlight bearing the blue star symbol. For other events, voucher seats are limited to a total of six seats per performance. Further details as well as membership forms are available from the Box Office.

## GENERAL INFORMATION

Theatre programs start promptly at the advertised start time and latecomers will not be admitted until a suitable break in the performance. Smoking is not allowed in any part of the Pilbeam Theatre or other Council venues.

The use of cameras and recording devices during performances is illegal and penalties for infringement of copyright in this way are severe. Please ensure all mobile phones are switched off before entering the auditorium. Crying or fidgety children can be a distraction to other theatregoers and performers, so if you bring your small child to the theatre, please book an aisle seat in case you need to exit the auditorium.

## TICKETING ABBREVIATIONS

<b>A:</b> Adult	<b>S:</b> Student	<b>J:</b> Junior *
<b>C:</b> Concession	<b>FoT:</b> Friend of Theatre	<b>SC:</b> Senior's Card
<b>P:</b> Pensioner	<b>G10+:</b> Group of 10 or more	<b>F:</b> Family

\*Preschool and school age, 3 yrs to 17 yrs. May have additional age restrictions. Please check with the Box Office to confirm eligibility for a particular price category.

## REID'S GALLERY AND GIFTS

**WHERE** WALTER REID CULTURAL  
CENTRE

**WHEN** MONDAY - SATURDAY  
3 - 28 MAY. 10AM - 3PM



**F**or a special gift, come and browse the great range of locally produced art and crafts pieces for sale at Reid's Gallery and Gift in May.

Pottery, weaving, cards, jewellery, felting, embroidery, prints and more are for sale. All items are hand crafted by local artists.

## review us

Attended one of our events and loved it?  
Leave us a review on TripAdvisor!

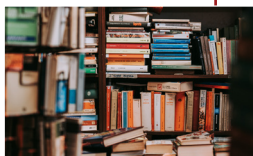


## LIFELINE BOOKFEST AND CLOTHING SALE

**WHERE** ROBERT SCHWARTEN  
PAVILION, ROCKHAMPTON  
SHOWGROUNDS

**WHEN** FRI 6 MAY. 8:30AM - 4PM  
SAT 7 MAY. 8:30AM - 4PM

**COST** FREE ENTRY



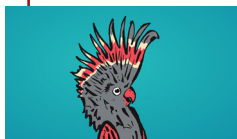
**B**ring your friends and family to the Lifeline Bookfest and lose yourself in preloved books, books and more books!

Hundreds of titles and a vast array of mystery, fantasy, humour, crime, romance, paperback, fiction, nonfiction and children's favourites.

Tables of clothing will also be available for purchase, with styles to suit everyone in the family - in every season! All clothing items are priced at \$2.

*Please note this year's bookfest will be held at the Robert Schwarten Pavilion.*

# MELBOURNE INTERNATIONAL COMEDY FESTIVAL ROADSHOW



## WHERE

PILBEAM THEATRE

## WHEN

FRI 6 MAY. 7:30PM

## COST

A \$45, C \$41, G(6+) \$39EA,  
FOT \$39



**The ultimate comedy road trip returns in 2022! Strap yourself in Australia! The Melbourne International Comedy Festival Roadshow is hitting the highways to home-deliver the freshest and funniest from the 2022 Festival to neighbourhoods across the nation.**

For 24 years the Roadshow has presented an all killer, no filler line-up of Australian stars and talented newcomers to comedy fans far and wide.

Buckle up for a night of stand-up, sketch, satire, silliness and song in this rip-roaring road trip designed to satisfy all your post-pandemic comedy cravings!

Book now for that much-needed live comedy fix when the Melbourne International Comedy Festival Roadshow rolls into Rockhampton!

*Contains coarse language and adult themes.*

## find us on facebook

Keep up to date with what is happening at the Pilbeam Theatre, see sneak peeks, previews, behind the scenes video of upcoming events and more at our Facebook page.

[www.facebook.com/pilbeamtheatre](https://www.facebook.com/pilbeamtheatre)

## 2022 ROCKHAMPTON EISTEDDFOD



## WHERE

PILBEAM THEATRE

## WHEN

APRIL AND MAY

**The 2022 Rockhampton Eisteddfod will be held over April and May. Sections will be held at the Pilbeam Theatre and Walter Reid Cultural Centre.**

Please refer to the Eisteddfod Program for performance dates and times.

spotlight

pg. 4

## MESSY PLAY MATTERS

**WHERE** ROBERT SCHWARTEN  
PAVILION, ROCKHAMPTON  
SHOWGROUNDS

**WHEN** TUE 10 MAY

**COST** FREE



**M**essy Play Matters and it's back in 2022! After a couple of years of isolating due to COVID-19, Messy Play Matters is back and is a celebration that brings together families with children, birth-to-five years.

It promotes playgroup as a lifeline that connects and bonds children, families, and communities through the fundamentals of play. Messy Play Matters is a free event where children are encouraged to explore the world of squishy, squashy, foamy, slimy, and goopy. So grab a friend, come along, and get messy to discover exactly why Messy Play Matters! Keep an eye out on our Facebook page for updates: Central Queensland Playgroup Hub.

## CLASSICAL REIMAGINED

**WHERE** PILBEAM THEATRE

**WHEN** TUE 10 MAY

**COST** A \$35, C \$28, TEACHER \$15,  
G (STUDENT) \$11EA, J \$17



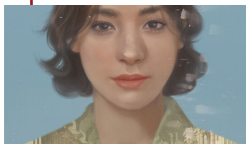
**C**amerata – Queensland's Chamber Orchestra performs a program of beloved and joyous classical music alongside a new Australian work in a performance that the whole family will enjoy!

*Classical Reimagined* will feature timeless classical masterpieces by Mozart and Tchaikovsky in stunning new interpretations, along with a brand-new composition by Camerata's Emerging Composer-in-Residence, Alexander Voltz. Inspired by his recent trip exploring the Emerald region, Voltz's piece will conjure evocative soundscapes in an exciting new work for string orchestra. Camerata is delighted to premiere the work in regional Queensland, following a long tradition of local audiences loving new music commissioned by Camerata, previously based on the Fraser Coast, Winton and Paronella Park in Far North Queensland.

Performing without a conductor, the two-time Helpmann Award nominated ensemble has established itself as a chamber orchestra of national significance. Known for their innovative and adventurous programming, Camerata thrives on collaborations with artists across a range of artforms and delights in working and performing with local musicians of any age and experience.

*Classical Reimagined* will be a joyful and lively concert experience, not to be missed

## THE SOPRANOS



**WHERE** PILBEAM THEATRE  
**WHEN** THUR 12 MAY. 7:30PM  
**COST** A \$52, C \$48, J \$20,  
G(6+) \$45EA, FOT \$45



**Opera Queensland's The Sopranos celebrates the bold and rebellious roles women have played throughout the history of opera.**

In this rich and exciting terrain, women dare to be different, love more intensely than is considered proper, refuse to play the roles they were supposedly born to play – and often face shockingly violent ends. Yet even as they meet madness or murder, sopranos command the stage with voices so virtuosic and emotionally powerful audiences are enthralled century after century. Shining a light on some of the greatest dramatic moments in the repertoire, The Sopranos challenges our assumptions, inviting us to experience these unforgettable women anew.

*Opera Queensland is supported by the Queensland Government through Arts Queensland. Presented by Rockhampton Regional Council.*

## QUEEN 50 YEARS ON



**WHERE** PILBEAM THEATRE  
**WHEN** SAT 14 MAY. 8:00PM  
**WHEN** A \$79.90, C \$74.90,  
J \$59.90, FOT \$69.90  
G(6+) \$69.90EA,

**Following a hugely successful 2019/2021 sell-out tours, Queen – Bohemian Rhapsody are returning with a brand new show in 2022 combining Queens greatest hits and a few of the most popular songs on their albums.**

Featuring well known Australian Freddie Mercury impersonator, Thomas Crane along with his band Bohemian Rhapsody, the show will bring back to life the visual excitement, sound and stage energy as witnessed at a Queen concert. Queen, Bohemian Rhapsody will perform all the great hits like We Will Rock You, Crazy Little Thing Called Love, We Are The Champions, Radio Ga Ga, A Kind of Magic, I Want To Break Free, Another One Bites the Dust, Bohemian Rhapsody.

## JERSEY BOYS - RETURN SEASON

**WHERE** PILBEAM THEATRE

**WHEN** THUR 19 MAY. 7:30PM  
FRI 20 MAY. 7:30PM  
SAT 21 MAY. 3:30PM

**COST** A \$52, C \$48, FOT \$45  
J (3-17 YEARS) \$37,  
F (2A+2J) \$155, G (6+) \$45 EA



**If you missed Jersey Boys in March when part of the season was cancelled due to COVID-19, then here is your chance to see it! We've got the company back together again and will be performing the show in May. Three performances only.**

With chart-topping music, memorable characters and great storytelling, Jersey Boys follows the evolution of four kids who became one of the greatest successes in pop music history, Frankie Valli and the Four Seasons. If you like music from the 1960s such as Sherry, Big Girls Don't Cry, and Can't Take My Eyes Off You, then you're going to love this show.

## MAGIC MEN

**WHERE** PILBEAM THEATRE

**WHEN** THUR 26 MAY. 8:00PM  
FRI 27 MAY. 8:00PM

**COST** PREMIUM ROWS \$99,  
DELUXE \$75, GENERAL \$50



**Magic Men is bringing together the biggest and the baddest crew to the Pilbeam Theatre.**

This is your chance to watch this top-tier stage production with exhilarating dance moves you will daydream about! Expect a blood-pumping performance from our all-star cast and find out why Magic Men have been voted the best male revue show in Australia. So, grab your girls and enjoy an epic girls night out.

## CREEDENCE CLEARWATER COLLECTIVE



**WHERE** PILBEAM THEATRE  
**WHEN** SAT 28 MAY. 8:00PM  
**COST** A \$69, C \$59, J \$40,  
FOT \$59

**Join us for a celebration of Creedence Clearwater Revival, as we walk-through the life and music of one of the world's most iconic bands – from the songs they wrote, to the songs covered, to the songs they wrote for others.**

From their album debut in 1968 to their last album in 1972, Creedence Clearwater Revival was a juggernaut of phenomenal proportions. No other band has created such an impact in such a short time. The Creedence Clearwater Collective brings to the stage a six piece band – with a guest Saxophonist and a vocalist that emulates John Fogerty's distinct vocals – to capture the unique Creedence Clearwater Revival sound. You do not want to hear through the grapevine that you missed out on this hit-packed production.

## ROBERTSON BROTHERS 1960'S VARIETY SHOW



**WHERE** PILBEAM THEATRE  
**WHEN** SUN 29 MAY. 2:00PM  
**WHEN** A \$69, C \$65, J \$65,  
G(10+) \$65 EA, F(2A+2J) \$260

**Do you dream of reliving the good old days? Well don't miss The Robertson Brothers 1960's TV variety show, with special guest Simon Brook McLachlan - from the original cast of the hit musical Jersey Boys.**

Take a trip down memory lane with this amazing interactive live TV variety show featuring hits from: The Seekers, Bee Gees, Frankie Valli and The Four Seasons, Neil Sedaka and The Everly Brothers!

Through the prism of the variety TV show format you'll travel back in time to embrace and celebrate all the hits of these 60's music Legends. You'll be singing, dancing, laughing and crying to Georgy Girl, Mornintown Ride, I'll Never Find Another You, Oh Carol, Calendar Girl, Happy Birthday Sweet 16, Spicks and Specks, To Love Somebody, Massachusetts, Sherry, Walk Like A Man, Big Girls Don't Cry, Let's Hang On, Bye Bye Love, Wake Up Little Susie, All I Have To Do Is Dream, Bus Stop, plus so many more in this celebration of your favourite 60's Superstars!

## MORNING MELODIES: GOLDEN

### WHERE

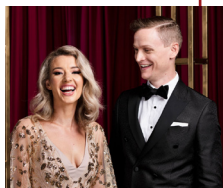
PILBEAM THEATRE

### WHEN

MON 30 MAY. 11:00PM

### COST

A \$20, P \$18, G6+ \$17EA,  
FOT \$17



**All that glitters is gold in this glistening musical mixtape from the award-winning creators of Christmas Actually and There's Something About Music. Golden unites superstar vocalists Luke Kennedy (Swing On This, The Voice Australia) and Irena Lysiuk (Your Song, Are You Lonesome Tonight), with piano virtuoso Damian Sim, for a musical celebration of contemporary music's golden hits.**

Journey with these world-class artists through a treasure trove of Hollywood and Broadway's most-loved soundtracks and relive iconic music moments from your favourite films and stage shows, including My Fair Lady, West Side Story, The Sound of Music, An Officer and a Gentleman, A Star Is Born and many more. Promising sparkling original arrangements, powerhouse vocals and a set list that's pure gold, The Little Red Company's Golden will dazzle and delight.

Morning Melodies is presented by  
Rockhampton Regional Council and Brumby's  
Allenstown / Gracemere / Parkhurst.



## THE WORLD OF MUSICALS

### WHERE

PILBEAM THEATRE

### WHEN

WED 1 JUN. 7:30PM

### COST

A \$79.90, C \$74.90,  
J \$59.90, G(10+) \$74.90EA,  
F(2A+2J) \$279.60



**The World of Musicals Concert has graced stages across the globe and features a world-class ensemble of multi-talented performing artists who exquisitely recreate classic hits, fused with emotive ballads, big-screen anthems and iconic show tunes.**

From the best of The Phantom of the Opera and Les Miserables to We will Rock You, Sister Act and many more, the World of Musicals delivers a stirring musical concert theatre experience that will leave you spellbound – from the opening song to the final medley of classics.

*Please Note: This is the rescheduled performance of World of Musicals, originally scheduled for October, 2021. Ticket holders for the original show do not need to change their tickets.*

## ROCKHAMPTON SHOW



**WHERE** PILBEAM THEATRE  
**WHEN** WED 8 JUN. - FRI 10 JUN  
(PUBLIC HOLIDAY 9 JUN.)  
**COST** A \$10, C \$5, J \$5.  
U5 FREE

**The Rockhampton Agricultural Show returns to the Rockhampton Showgrounds in June with everyone's favourite rides, sideshows, showbags and show food.**

There'll be wood-chopping, show-jumping, fireworks, community stage, a petting zoo, Dock Dogs, and so much more – and all for the incredibly low entry price! You won't find a better day of fun anywhere else this winter!

Visit [www.rockyshow.com.au](http://www.rockyshow.com.au) for more details.

## EDWARD THE EMU



**WHERE** PILBEAM THEATRE  
**WHEN** MON 13 JUN. 6:30PM  
TUE 14 JUN. 10:00AM  
TUE 14 JUN. 12:00PM  
**COST** A \$19, C \$15  
(SCHOOL GROUP DISCOUNTS  
AVAILABLE FOR MATINEE SHOWS)



**Edward is bored with his lot. Being the only emu at the zoo has left him feeling glum and under the impression that the grass is greener in everyone else's enclosure.**

Convinced that the other creatures are more popular, Edward breaks ranks and goes to find the fun and along the way, finds Edwina! Written for the stage by Monkey Baa's Artistic Director Eva Di Cesare (Diary of a Wombat, Josephine Wants to Dance) we follow the emus as they hilariously navigate their own feathered existential crises, seeking to find their place in the world. Meanwhile, unaware of the birds' internal worlds, their human keepers are in hot pursuit to restore order to the zoo.

The award-winning Monkey Baa team brings to the stage a new imagining of the classic Australian book, by Sheena Rowles and Rod Clement. Edward and Edwina both wonder if there is more to life than being an emu but after adventures beyond the enclosure, they discover that the best thing you can be is... you!

## LES DIVAS: AN ALL-MALE REVUE

**WHERE** PILBEAM THEATRE  
**WHEN** FRI 17 JUN. 8:00PM  
**COST** A \$66, C \$61, FOT \$60  
G(10+) \$59EA, F(2A+2J) \$250



**From the producers of Prada Clutch's: All-Drag Revue comes Les Divas: An all-male revue.**

Australia's six-foot something songstress Prada Clutch plays the Goddess of Pop, Cher, in her new show set on the Las Vegas Strip featuring an all-star line-up of her most famous friends. The ninety-minute all-male revue includes some of the world's greatest divas including: Barbara Streisand, Shirley Bassey, Tina Turner, Mariah Carey, Beyoncé, Whitney Houston, Celine Dion, Diana Ross and, of course, Cher! Relive their greatest hits including: If I Could Turn Back Time, Get The Party Started, Proud Mary, I Will Always Love You & I'm Coming Out.

The show is Creatively Directed by one of Australia's original divas from Les Girls of Kings Cross, Monique Kelly. Monique was a cast member of Les Girls from 1973 to 1997.

*Recommended for ages 15+. Minors must be accompanied by an adult.*

## CENTRAL QUEENSLAND CONTEMPORARY ARTISTS

**WHERE** WALTER REID CULTURAL  
CENTRE  
**WHEN** WEDNESDAYS 9AM - 12PM



**Whether you are a beginner or an experienced artist, everyone is welcome at the Central Queensland Contemporary Artists group in the Walter Reid Cultural Centre.**

CQCA are a social group of visual artists made up of various members of the community from young, to young at heart and from all walks of life. The variety of the group enriches everyone's perspective. Learners encouraged and challenged by more experienced artists.

The group enjoys experimenting with various mediums: linoleum printmaking, etching, batik, papermaking, marbling, as well as watercolour, oil and acrylic painting.

The group meets every Wednesday morning and holds regular workshops throughout the year for their members. Contact Kay on 0419 284 093 if for more details.

## STARLIGHT IN SYMPHONY



**WHERE** PILBEAM THEATRE  
**WHEN** SAT 18 JUN. 7:30PM  
**COST** A \$52, C \$48,  
U26 PAY-YOUR-AGE

**Starlight in Symphony presents internationally renowned Australian pianist Simon Tedeschi, who will perform the dramatic Grieg Piano Concerto and Gershwin's jazz influenced classic, Rhapsody in Blue with Rockhampton Symphony Orchestra.**

Simon Tedeschi is one of Australia's most renowned classical pianists, winner of the Young Performer of the Year Award (Australia), the Creativity Foundation's Legacy Award (USA), and the New York Young Jewish Pianist Award. Recipient of a Centenary of Federation Medal, he has performed for audiences, royalty and world leaders worldwide. RSO Conductor Owen Clarke, again brings to Central Queensland his professional conducting talents, honed whilst Director of Music for the Royal NZ Air Force and Navy Bands, Auckland Philharmonia and Christchurch Symphony. Audiences will swoon to Mozart's popular 40th Symphony and find it hard to resist tapping along with Aaron Copland's Hoe-Down and other well-known classics.

## IMPERMANENCE



**WHERE** PILBEAM THEATRE  
**WHEN** SAT 25 JUN. 7:30PM  
**WHEN** A \$52, C \$48, J \$20,  
FOT \$45, G(10+) \$45EA.



**Sydney Dance Company returns to the Pilbeam Theatre in June with, Rafael Bonachela's Impermanence.**

Described as being "arguably the single best piece created by and for an Australian dance company for many years" (Adelaide Advertiser), Impermanence comes to Rockhampton after a sell-out Sydney world-premiere season and an Adelaide Festival smash hit run. This full-length work features a new score full of emotional power from Grammy Award-winning composer Bryce Dessner.

Best known as a founder of American rock band The National and for his film scores for The Revenant and The Two Popes, Dessner was initially inspired by the tragedy of the Australian bush fires and the Notre-Dame fire in Paris. Sydney Dance Company's "awe-inspiring" (In Daily) ensemble is joined live on stage by the Australian String Quartet. This is epic, driven performance that packs an emotional punch.

Experience the power of dance and music performed (live) together, laden with meaning, fleeting and vulnerable and from devastation, find energy, urgency, radiance and hope.

*Presented by Rockhampton Regional Council. Part of the 2022 See It Live Theatre Season.*

spotlight

## WHERE

PILBEAM THEATRE

## WHEN

30 JUN. 7:30PM

## COST

A \$65, C \$55, P \$55, J \$55



**LEAP is an explosive new dance show created by Amy Campbell, one of Australia's most exciting young creatives.**

Featuring ten of Australia's foremost dancers and four extraordinary musicians, LEAP re-imagines recognisable classical music into a modern soundtrack. A unique blend of dance and story, LEAP will transport you into the lives of compelling characters in the effervescent and unknown world that is LEAP. Do you stay where you are...or will you take the leap? What would you do to get everything you ever dreamed of?

Catch LEAP on its premiere Australian tour before it takes the world by storm!

## friends of theatre

If you enjoy the theatre, then why not become a member of Friends of the Theatre?

Friends of the Theatre is a group of people who want to be part of the exciting world of live theatre. Friends lend a hand in the theatre by volunteering to work in the bar, candy bar, program selling and ushering areas. But it's not all work and no play. Friends who volunteer to work also receive vouchers which can be redeemed for tickets to shows (depending on availability).

For more information, contact the Pilbeam Theatre Box Office on 4927 4111 or visit [www.seeitlive.com.au](http://www.seeitlive.com.au)



## GOANNA



**WHERE** PILBEAM THEATRE  
**WHEN** SUN 3 JUL. 7:30PM  
**COST** ALL TICKETS \$82.40

**Forty years on, and with their messages of positive engagement in Indigenous rights and environmental protection more relevant than ever, Australian icons Goanna return to celebrate their multi-platinum, game-changing debut album 'Spirit of Place'.**

In the early '80s, in the midst of Aussie Rock's golden age, Goanna helped forge a new Australian identity. Before Midnight Oil and Paul Kelly addressed similar issues, the iconic 'Solid Rock' stoked a fire for Indigenous rights that hasn't gone out, while the anthem of 'Let The Franklin Flow' was a call to arms for the emerging environmental movement. Soulful, lyrical, brimming with musicality and creative volatility, Goanna mixed classic folk song craft with spirited roots rock, helping to establish a musical thread that remains vital and ubiquitous in Australian music today. In 2022, Shane Howard, Rose Bygrave, Marcia Howard and Graham Davidge, with special guests, embark on a new journey. Reigniting the Goanna spirit once more and paying homage to their classic songs.

## WOMEN IN VOICE



**WHERE** PILBEAM THEATRE  
**WHEN** SAT 9 JUL. 7:30PM  
**COST** A \$45, C \$41, G(6+) \$39EA,  
FOT \$39, J \$19,  
TEACHER \$39,  
G(STUDENT)\$17EA

**After wowing audiences last year, Women in Voice returns to the Pilbeam Theatre with an absolutely stellar line up of Central Queensland's finest female singers.**

In a show unlike any other, Women in Voice gives each singer the opportunity to explore her own unique voice, whether it's a collection of songs with a special meaning or by a favourite artist, a story told through song or something served up with a healthy dollop of humour. A delicious smorgasbord of delights drawn from across musical genres, it promises a night of superb musicianship and theatricality, a night of both individual brilliance and superb ensemble singing as the cast come together as backing vocalists for each other.

Visit [www.seeitlive.com.au](http://www.seeitlive.com.au) for announcements of the Women in Voice 2022 cast.

*Produced by Lock&Hock Productions, in association with Women in Voice, presented by Rockhampton Regional Council.*

## morning melodies

Join us for some fabulous shows in our 2022 Morning Melodies season. All shows start at 11am, with morning tea supplied by Brumby's Allenstown / Gracemere / Parkhurst from 10am

<b>30 May</b>	Golden
<b>25 July</b>	Tenori - Beyond the Sea
<b>17 Oct</b>	1954: Ella, Etta & Eartha
<b>12 Dec</b>	Darren Coggan

Morning melodies is presented by Brumby's and Rockhampton Regional Council.



## MORNING MELODIES: TENORI

**WHERE** PILBEAM THEATRE  
**WHEN** MON 25 JUL. 11:00AM  
**COST** A \$20, P \$18, G(6+) \$17,  
FOT \$17



**Join these classically-trained Aussie larrikins in their new show Beyond the Sea, a musical journey around the world. Songs from Spain, Cuba, France, Italy, Norway, England, the U.S., Australia - everywhere man... Tenori employs the talents of three of Australia's powerhouse singers: David Kidd, Stewart Morris and Andrew Pryor.**

With a combined sixty years international experience in the industry, these polished professionals know exactly how to put on a dynamic, uplifting and hugely entertaining show.

The three met while touring internationally with The Ten Tenors, performing in venues such as London's Royal Albert Hall, The Pantages Theatre in LA and the Sydney Opera House. After some time apart working with Opera Australia, Opera Queensland and many of the country's finest orchestras, they are back together doing what they do best.

Morning Melodies is presented by Rockhampton Regional Council and Brumby's Allenstown / Gracemere / Parkhurst.



# events calendar

MAY

<b>3-28</b>	Reid's Gallery & Gifts	WRCC
<b>6</b>	Melbourne Comedy Festival Roadshow	PT
<b>6-7</b>	Lifeline Bookfest	RSG
<b>10</b>	Messy Play Matters	RSG
<b>10</b>	Classical Reimagined	PT
<b>12</b>	The Sopranos	PT
<b>14</b>	Queen - 50 Years On	PT
<b>19-21</b>	Jersey Boys - Return Season	PT
<b>26-27</b>	Magic Men	PT
<b>28</b>	Creedence Clearwater Collective	PT
<b>29</b>	Robertson Brothers TV Variety Show	PT
<b>30</b>	Morning Melodies: Golden	PT

JUNE

<b>1</b>	The World of Musicals	PT
<b>8-10</b>	Rocky Show	RSG
<b>13-14</b>	Edward the Emu	PT
<b>17</b>	Les Divas	PT
<b>18</b>	R'ton Symphony Orchestra	PT
<b>25</b>	Impermanence	PT
<b>30</b>	Leap	PT

**PT:** Pilbeam Theatre      **WRCC:** Walter Reid Cultural Centre  
**RSG:** Rockhampton Showgrounds      **HV:** Heritage Village  
**MB:** Music Bowl      **O:** Other Venue

## Administration Office

Pilbeam Theatre, 2 Cambridge Street  
 PO Box 1860 Rockhampton 4700

**TICKETING** 4927 4111 | **ADMINISTRATION** 4924 5600

**SEEITLIVE.COM.AU** 

The Pilbeam Theatre is owned and operated  
 by Rockhampton Regional Council.

