

spotlight

EVENT GUIDE



MAMMA
MIA!

MARCH - APRIL
2020

FEATURE EVENT

MAMMA MIA
13-21 MARCH

SEEITLIVE.COM.AU



buy your tickets

AT THE BOX OFFICE | Pilbeam Theatre Box Office

BY PHONE | Dial'n'Charge 4927 4111

ONLINE | www.seeitlive.com.au

FRIENDS OF THE THEATRE

If you enjoy the theatre, why not become a Friend of the Theatre? Friends of the Theatre is an organisation where members volunteer to work in various aspects of the theatre such as ushering, bar, candy bar and program selling. Friends receive discounts to many of the shows listed in Spotlight, and also receive this newsletter mailed direct to them.

Each time a Friend of the Theatre works they receive a Performance Work Voucher, which is exchanged for tickets to events. Unlimited seats are available in exchange for Performance Work Vouchers on events in Spotlight bearing the blue star symbol. For other events, voucher seats are limited to a total of six seats per performance. Further details as well as membership forms are available from the Box Office.

GENERAL INFORMATION

Theatre programs start promptly at the advertised start time and latecomers will not be admitted until a suitable break in the performance. Smoking is not allowed in any part of the Pilbeam Theatre or other Council venues.

The use of cameras and recording devices during performances is illegal and penalties for infringement of copyright in this way are severe. Please ensure all mobile phones are switched off before entering the auditorium. Crying or fidgety children can be a distraction to other theatregoers and performers, so if you bring your small child to the theatre, please book an aisle seat in case you need to exit the auditorium.

TICKETING ABBREVIATIONS

A: Adult **S:** Student **J:** Junior *
C: Concession **FoT:** Friend of Theatre **SC:** Senior's Card
P: Pensioner **G10+:** Group of 10 or more **F:** Family

*Preschool and school age, 3 yrs to 17 yrs. May have additional age restrictions. Please check with the Box Office to confirm eligibility for a particular price category.

SWINGIN' MARTINIS

WHERE PILBEAM THEATRE

WHEN MON 17 FEB. 11AM.

COST A \$20, P \$18, FOT \$19.
G 10+ \$17

Take a couple of swingers, hand them microphones, slip them into tuxedos & what do you have?

The Swingin' Martinis! With a double scoop of comedy, a generous serving of musical mayhem and some good old slapstick, The Swingin' Martinis have put together a cocktail that any self-respecting Swinger will not want to miss. Johnny Reid and Vinny Nowell (aka The Swingin' Martinis) swing their way through an array of classic tunes that will have the audience singing (and dancing) along at a cracking pace! But make no mistake, this show is not just about a couple of guys who can sing well, it is also a classic comedy double act that has elements of voluntary and contagious audience participation.

Morning Melodies is presented by Rockhampton Regional Council and Bolsover Radiology. A free morning tea, courtesy of Brumby's Allenstown / Gracemere / Parkhurst, is provided before the show.



pay-your-age

Shows noted as PAY-YOUR-AGE can be seen by patrons aged 26 years and under for just \$1 per year of age. Proof of age will be required.

POTTERY EXHIBITION

WHERE KERN ARCADE,
EAST ST

WHEN MARCH

Capricornia Potters Group will hold an exhibition of their work in the Kern Arcade For Lease shop during March.



On display will be a variety of pottery, with all works for sale. If you are interested in pottery, Capricornia Potters Group hold regular classes for adults in their rooms on the top floor of the Walter Reid Cultural Centre. More information: Ruby 0431 365 747 or Facebook pickapot pottery.

FINCH AND PARROT SALE



WHERE ROBERT SCHWARTEN
PAVILLON ROCKHAMPTON
SHOWGROUNDS

WHEN SUN 8 MAR. 9AM - 12PM.

COST \$2. CHILDREN <13YRS FREE

Parrots, finches, budgerigars, lovebirds, doves, neophemas, quail and more will be on display and for sale at the Rockhampton Finch and Parrot Social Club's annual sale.

Bird cages, seed and accessories, as well as trade displays will also be on sale.

CHAMBER MUSIC SOCIETY CONCERT



WHERE CHAMBER MUSIC ROOMS 1-5
WALTER REID CULTURAL
CENTRE

WHEN SUN 8 MAR. 2PM.

COST GOLD COIN DONATION

Rockhampton Chamber Music Society performs monthly concerts in their Rooms at the Walter Reid Cultural Centre.

Concerts feature music of all genres with vocal and instrumental items. If you are interested in performing, please come along to rehearsals at the clubrooms on Saturday mornings from 9.30am. Please note that while very effort is made to organise these concerts, sometimes alternative dates may be necessary. Visit our Facebook page (Rockhampton Chamber Music Society) for more information.

LANDHOLDERS EXPO 2020



WHERE ROBERT SCHWARTEN
PAVILLON (OUTDOOR),
ROCKHAMPTON
SHOWGROUNDS

WHEN SUN 1 MAR

COST FREE ENTRY

Rockhampton Regional Council's Pest Management team in conjunction with Fitzroy Basin Association will be hosting a Landholders Expo targeting landholders, rural and semi-rural residents and commercial businesses in the farming industry.

The event provides practical, agricultural industry training sessions and trade displays, showcases products and machinery, as well as insights on conservation, farming, grazing, pest management, agriculture and animal management.

EMBROIDERY WORKSHOPS

WHERE WALTER REID CULTURAL
CENTRE

WHEN MARCH - TBC.



Rockhampton Embroiderers' Guild offers free workshops to members at their rooms in the Walter Reid Cultural Centre.

In February, the subject is Zen embroidery (similar to adult colouring books), and in March Glenda Semple will teach Mountmellick whitework. Stitch of the month for 2020 is canvas work. New members welcome. For more details visit the rooms at the Walter Reid Cultural Centre on Saturday 1pm to 4pm or Wednesdays 9am to midday. Workshop queries phone Rosslyn 4928 8754.

MAMMA MIA

WHERE PILBEAM THEATRE

WHEN FRI 13 MAR. 7.30PM.
SAT 14 MAR. 7.30PM.
SUN 15 MAR. 1.30PM
THURS 19 MAR. 7.30PM.
FRI 20 MAR. 7.30PM.
SAT 21 MAR. 7.30PM.

COST A \$52, P/SC \$48,
J(3-17) \$37, F(2A+2C) \$155,
G6+ \$48



Following on the success of previous musicals Kinky Boots, We Will Rock You, Wicked and Mary Poppins comes Rockhampton Regional Council's 2020 musical, Mamma Mia!

The show, which premiered in 1999 and has since become a long running worldwide hit, is based on the music of ABBA. It features songs including Dancing Queen, Knowing me Knowing You, Take a Chance on Me, Money Money Money, SOS, and Mamma Mia, just to name a few.

Set on a Greek island paradise and inspired by the story-telling magic of ABBA's timeless songs, writer Catherine Johnson's heart-warming tale centres around Sophie, a young bride-to-be. On the eve of her wedding, Sophie's quest to discover the identity of her father brings three men from her mother's past back to the island they last visited 20 years ago.

Directed by Joy Philippi, Musical Director Jeanette Douglas, Choreographer Lita Hegvold, Vocal Director Jacinta Delalande.

Part of the 2020 See It Live Theatre Season. Include this show in your See It Live Theatre Season Select and Save pack and save \$\$.

SPEEDWAY



WHERE ROCKHAMPTON
SHOWGROUNDS

WHEN SAT 21 MAR

Program features Super Sedans, Junior Sedans, Super Stockers, Productions and AMCAs.

find us on facebook

Keep up to date with what is happening at the Pilbeam Theatre, see sneak peeks, previews, behind the scenes video of upcoming events and more at our Facebook page.

www.facebook.com/pilbeamtheatre

GRACE UNDER PRESSURE



WHERE PILBEAM THEATRE

WHEN TUES 24 MAR. 7:30 PM.

COST A \$45, C \$41, FOT \$41,
26 YRS AND UNDER
PAY-YOUR-AGE



Hhealth professionals are with us when we're born, and they're with us when we die. They devote their lives to caring for us, but how do we care for them?

Can a doctor or nurse give a patient the best possible care if he or she hasn't slept for days? What if they're also being bullied or sexually harassed at work? What if they complain about having to work excessive hours, but are told to stop whinging and suck it up? How do they cope with the pressure?

Based on hours of in-depth interviews with doctors and nurses about their experiences of training and working in hospitals, Grace Under Pressure is a surprising, intimate, and deeply moving theatre experience that reveals these hidden stories of health professionals in their own words. Ranging from wildly funny to utterly heartbreaking, the stories within Grace Under Pressure will leave no audience member unaffected. Beautifully staged and disarmingly performed, Grace Under Pressure is a truly unique theatre experience. Grace Under Pressure is written by David Williams & Paul Dwyer, and produced in collaboration with the Sydney Arts & Health Collective.

Patron Advice: Recommended for 14 years and over. Occasional coarse language and adult themes. **Duration:** 85 minutes (no interval).

Part of the 2020 See It Live Theatre Season. Include this show in your See It Live Theatre Season Select and Save pack and save \$\$.

ONE ACT PLAY FESTIVAL

WHERE WALTER REID CULTURAL
CENTRE

WHEN FRI 27 MAR. 7:30PM.
SAT 28 MAR. 7:30PM.
FRI 3 APR. 7:30PM.
SAT 4 APRIL. 7:30PM.

COST A \$24, C \$20, J(<18) \$14



Rockhampton Little Theatre is proud to present a One Act Play Festival that promises to make audiences laugh.

Four comedy plays will be performed each night. Come enjoy a great show and support our ever-increasing troupe of local talent! Bar opens at 7pm each night.

WOMEN'S WELLNESS EXPO

WHERE ROBERT SCHWARTEN
PAVILLON (OUTDOOR),
ROCKHAMPTON
SHOWGROUNDS

WHEN SUN 29 MAR. 10AM-2PM.

COST FREE ENTRY



The Women's Wellness Expo is on again! Encompassing all areas of women's health.

Information, inspiration, and fun with a wide range of educational and informative products and services on how to improve wellness and get the most out of life for women and their families. Free entertainment, activities and demonstrations.

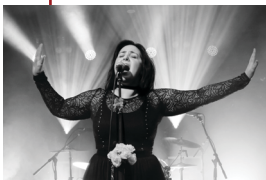
morning melodies

Join us for some fabulous shows in our 2020 Morning Melodies season. All shows start at 11am, with Morning tea supplied by Brumby's Allenstown from 10am.

17 Feb The Swingin' Martinis
30 Mar Bloom sings Nicks, King and Ronstadt
15 Jun The Best of Bubl 
24 Aug Love Sick
19 Oct Darren Coggan's Campfire

Morning Melodies is presented by Bolsover Radiology and Rockhampton Regional Council.

BLOOM SINGS NICKS, KING AND RONSTADT



WHERE PILBEAM THEATRE
WHEN MON 30 MAR. 11AM.
COST A \$20, P \$18, FOT \$19.
 G 10+ \$17

Stevie Nicks, Carole King and Linda Ronstadt are arguably three of the world's most recognizable voices.

With combined record sales topping in excess of over 300 million units sold, as well as an endless wealth of top 20 hits between them, they truly are three of the world's greatest. In this brand new show, Melbourne singer/songwriter, Bloom will perform the incredible hits that span several decades from the Grammy Award winning artists. Bloom, a singer in her prime belting out the songs of these three wonderful women.

Morning Melodies is presented by Rockhampton Regional Council and Bolsover Radiology. A free morning tea, courtesy of Brumby's Allentown / Gracemere / Parkhurst, is provided before the show.



THE 91 STOREY TREEHOUSE



WHERE PILBEAM THEATRE
WHEN TUES 31 MAR. 6:30 PM.
 WED 1 APR. 10AM AND 12PM.
COST A \$19, J \$15.
 (SCHOOL GROUP DISCOUNTS AVAILABLE)



Andy and Terry's Treehouse has reached an amazing 91 Stories! It's now Amore fantastically dangerous than ever, with a deserted desert island, a whirlpool, and a giant spider! But Andy, Terry and Jill have no idea they're about to face their biggest challenge yet!

Mr Big Nose has sent his grandchildren to the Treehouse, and they don't want to just sit quietly. Can Andy, Terry & Jill master this extreme babysitting challenge? What does mysterious fortune teller Madam Know-It-All really want? And will the Big Red Button really destroy the world?

The team behind the 13-, 26-, 52- and 78-Storey Treehouses Live on Stage return with a fantastical trip through this wild, weird and wonderful world for children 6-12 and their adults. Just beware of the Fortune Teller...

The 91 Storey Treehouse is a play by Richard Tulloch, adapted from the book by Andy Griffiths and Terry Denton.

Duration: 60 minutes (no interval).

Recommended age: 6-12 years.

CQ CONTEMPORARY ARTISTS

WHERE KERN ARCADE, EAST ST
WHEN 31 MAR - 19 APR



Central Queensland Contemporary Artists will start their 2020 calendar with a display of artwork in the For Lease space in the Kern Arcade, East Street.

THE SONGS OF DOLLY PARTON

WHERE PILBEAM THEATRE
WHEN FRI 3 APR. 7:30PM.
COST A \$57, C \$49, S/J \$29.
 FOT \$49, G6+ \$49.
 P(DISABILITY) \$45.



From rags to riches, Dolly's life story has remained humble and honest in her performance. After 60 years she continues to be America's sweetheart of Country Music.

This uplifting show that celebrates the decades-long success of Dolly Parton, the most honoured female country performer of all time. Starring Brooke McMullen, at just 23 she is a superstar in the making. After huge success as June Carter in the hit show Leaving Jackson, Brooke is thrilled to pay tribute to one of the biggest names in music. The songs of Dolly Parton will feature all your favourites, from 9 to 5, Jolene, Rocking Years, Islands in the Stream, Blue Smoke, Apple Jack, I Will Always Love You and many more. A performance not to be missed by all fans of country music.

PAINTINGS FROM THE SADDLE EXHIBITION

WHERE WALTER REID CULTURAL CENTRE GALLERY
WHEN FRI 3 APR. 6-9PM.
 SAT 4-SUN 5. 9-4PM.
COST FREE ENTRY.
 ALL WORKS FOR SALE.



Leading local outback artist Mark Coombe will hold an exhibition of Original oil paintings at the Walter Reid Centre. As the title of the exhibition "Paintings from the Saddle" suggests, works will feature paintings of stockmen and women at work with their horses and cattle. For more details follow Mark's Facebook and Instagram pages @Mark Coombe Outback Art.

THE SAPPHIRES



WHERE PILBEAM THEATRE
WHEN SAT 18 APR. 7:30PM.
COST A \$45, C \$41, FOT \$41,
 26 YEARS AND UNDER
 PAY-YOUR-AGE



The Sapphires, Written and Directed by Tony Briggs, is one of the Australia's best-loved stories, and winner of multiple awards for film, musical play and soundtrack album.

Now, Rockhampton audiences can experience the raw energy, fun and emotion of this story live on stage. The Sapphires is the story of four young Aboriginal women who like singing country music and suddenly get the chance to change their tune and their lives. Wearing sequins, armed only with microphones they find themselves trying to spread joy in the hell that is the Vietnam War.

The Sapphires is a funny, heart-warming tale inspired by the true story of four Yorta Yorta Women, who sing classic soul hits (performed live on stage) against the backdrop of personal change and massive social upheaval. It is an energetic, fun and engaging play that affirms life and the realisation of dreams.

Patron advice: Suitable for ages 7+. Some adult themes, simulated warfare and a small amount of coarse language. **Duration:** 140 minutes.

Part of the 2020 See It Live Theatre Season. Include this show in your See It Live Theatre Season Select and Save pack and save \$\$.

SPEEDWAY



WHERE ROCKHAMPTON
 SHOWGROUNDS
WHEN SAT 18 APR

Program features Super Sedans, Junior Sedans, Super Stockers, Productions and AMCAs.

review us

Attended one of our events and loved it?
 Leave us a review on TripAdvisor!



MISSION SONGS PROJECT

WHERE PILBEAM THEATRE
WHEN WED 6 MAY. 7:30PM.
COST A \$45, C \$41, FOT \$41,
 26 YRS AND UNDER
 PAY-YOUR-AGE



Searching for the secular songs that were sung after church, Mission Songs Project looks to explore the day to day life of the mission days, from cultural identity to love and loss.

These unique songs performed by an extraordinary trio of Indigenous musicians consist of almost forgotten stories that illuminate the history of our Aboriginal and Torres Strait elders, families and communities.

Presented as an acoustic trio, Jessie Lloyd takes audiences on a musical journey across Australia. She engages through intimate storytelling, moving harmonies and historical insights. Using humour and truth to share the voices of elders as they would around a warm campfire or kitchen table.

Patron Advice: Suitable for ages 12+. **Duration:** 60 minutes (no interval).

Part of the 2020 See It Live Theatre Season. Include this show in your See It Live Theatre Season Select and Save pack and save \$\$.

see it live in 2020!

The 2020 See It Live Theatre Season is here! Get your copy of the booklet from the Pilbeam Theatre Box Office, or view/download it online at www.seeitlive.com.au/season2020

Save money by buying a 'Select and Save' pack of 4, 6 or 8 shows.



13-21 Mar Mamma Mia
24 Mar Grace Under Pressure
18 Apr The Sapphires
6 May Mission Songs Project
6 Jun Rhapsody in Blue
9 Jun Melbourne Comedy Festival Roadshow
30 Jun Tutus on Tour
15 Jul Bonachela / Lane
19 Aug Tosca
10 Sept The Comedy of Errors

events calendar

MARCH

1	Landholders Expo 2020	RSG
3	Paintings from the Saddle exhibition	WRCC
8	Finch and Parrot Sale	RSG
8	Chamber Music Society Concert	PT
13-21	Mamma Mia	PT
21	Speedway	RSG
24	Grace Under Pressure	PT
27-4 APR	One Act Play Festival	WRCC
29	Women's Wellness Expo	RSG
30	Morning Melodies	PT
31-1 APR	The g1 Storey Treehouse	PT

APRIL

3	The Songs of Dolly Parton	PT
18	Speedway	RSG
18	The Sapphires	PT

PT: Pilbeam Theatre

WRCC: Walter Reid Cultural Centre

RSG: Rockhampton Showgrounds

HV: Heritage Village

O: Other Venue

Administration Office

Pilbeam Theatre, 2 Cambridge Street
PO Box 1860 Rockhampton 4700

TICKETING 4927 4111 | **ADMINISTRATION** 4924 5600 | **FAX** 4936 8835

SEEITLIVE.COM.AU 

The Pilbeam Theatre is owned and operated
by Rockhampton Regional Council.

