

Spotlight

Event Guide

November 2017 - February 2018

WE WILL
ROCK
YOU



See it Live [.com.au](http://seeitlive.com.au)

ROCKHAMPTON PILBEAM THEATRE

How to buy tickets

- Pilbeam Theatre Box Office
- Dial'n'Charge 4927 4111
- www.seeitlive.com.au

Transaction fees may apply

FRIENDS OF THE THEATRE ★

If you enjoy the theatre, why not become a Friend of the Theatre? Friends of the Theatre is an organisation where members volunteer to work in various aspects of the theatre such as ushering, bar, candy bar and program selling. Friends receive discounts to many of the shows listed in Spotlight, and also receive this newsletter mailed direct to them. Each time a Friend of the Theatre works they receive a Performance Work Voucher, which is exchanged for tickets to events. Unlimited seats are available in exchange for Performance Work Vouchers on events in Spotlight bearing the blue star symbol. For other events, voucher seats are limited to a total of six seats per performance. Further details as well as membership forms are available from the Box Office.

SEE IT LIVE REWARDS

Save money on tickets to many events in Spotlight by becoming a See It Live Rewards member. Ask the Box Office for more details.

GENERAL INFORMATION

Theatre programs start promptly at the advertised start time and latecomers will not be admitted until a suitable break in the performance. Smoking is not allowed in any part of the Pilbeam Theatre or other Council venues. The use of cameras and recording devices during performances is illegal and penalties for infringement of copyright in this way are severe. Please ensure all mobile phones are switched off before entering the auditorium. Crying or fidgety children can be a distraction to other theatregoers and performers, so if you bring your small child to the theatre, please book an aisle seat in case you need to exit the auditorium.

TICKETING ABBREVIATIONS

A = Adult	S = Student	U = Unemployed
Y = Youth	FoT = Friend of Theatre	P = Pensioner
J = Junior *	G10 = Group of 10 or more	SC = Senior's Card
C = Concession	RP = Reward Pensioner	RA = Reward Adult

CSC – Commonwealth Senior Card F = Family (2 adults & 2 children unless otherwise stated)

*Preschool and school age, 3 yrs to 17 yrs. May have additional age restrictions. Please check with the Box Office to ensure you are eligible for a particular price category.

Happy Birthday Play School: Celebrating 50 Years

Big Ted, Little Ted, Humpty and Jemima are coming to Rockhampton Art Gallery as part of a fun-filled exhibition to celebrate Play School's 50th birthday!



The travelling exhibition from the National Museum of Australia and developed in collaboration with the ABC includes hands-on activities and take-home surprises for all ages, and honours Australia's longest-running television program and its special place in peoples' hearts.

ROCKHAMPTON ART GALLERY

4 NOVEMBER 2017 TO 28 JANUARY 2018 FROM 9AM TO 4PM

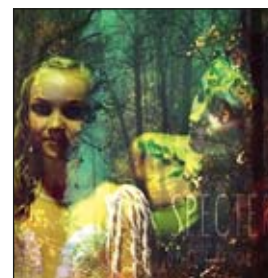
GENERAL ENTRY \$5, C & G \$3, FoG AND CHILDREN UNDER 5 FREE

2018 See it Live Theatre Season

The 2018 See It Live Theatre Season brochures will be available in mid-November. It's a year full of great theatre from the best state and national theatre companies and performers. You can save up to \$12 per ticket (depending on which subscription pack you purchase). Contact the Box Office on 4927 4111 to obtain your copy of the brochure.

SPECTER

As the Dream Catcher spins you into reverie, the students of EPIC Studios Australia will take you on a journey through an enchanted forest. Be captivated by the creatures of SPECTER as they dazzle you with this spellbinding combination of dance, circus, aerial, acrobatics and more. A family show not to be missed!



PILBEAM THEATRE

SATURDAY 4 NOVEMBER AT 6.30PM

A \$38, C \$33, Y \$33, CHILD (3-12) \$28

Annual Super Sedan Summer Slam

The biggest Tin Top Party of the summer. Queensland's best V8 super sedan stars converge on Rockhampton for the one and only round of the State series held in Rocky for this season. Modified Sedans and the Formula 500's CQ Rumble Series are also on hand to make the dirt fly.



ROCKHAMPTON SHOWGROUNDS

SATURDAY 4 NOVEMBER FROM 5PM TO 10PM

A \$25, CHILDREN \$15, F (2x A, 4x C) \$60

Australian South Sea Islander Exhibition

Linking The Generations is a small working group of volunteers who are of Australian South Sea Islander descent. The exhibition will showcase the Australian South Sea Islander culture and heritage to the wider community and districts. The official launch will be held Wednesday night and it will be open until 9pm.

WALTER REID CULTURAL CENTRE

TUESDAY 7 TO THURSDAY 9 NOVEMBER FROM 9AM TO 5PM

A GOLD COIN DONATION BOX AVAILABLE FOR PEOPLE WISHING TO DONATE

The Rhythms of Ireland

Ireland's most celebrated show, The Rhythms of Ireland, returns to Australia on their worldwide 10 Year Anniversary Tour. Experience a spectacular evening of traditional Irish Dance, music and song enhanced by stunning costumes, lighting and sound. This is indeed The Rhythms of Ireland.



The real culture, the real passion! Simply not to be missed.

PILBEAM THEATRE

TUESDAY 7 NOVEMBER AT 8PM

A \$69.90, P, J, FoT \$64.90, F (2A+2C) \$220, G6+ \$64.90 EACH

Rocky Flix: Finding Altamira

In 1879, Spanish archaeologist Marcelina (Antonio Banderas) and his daughter discover seemingly impossible paintings of galloping bison adorning the walls of a hidden cave. This begins fear and fury when the church and scientists become involved.



Spain, 2016. Rated PG. 97mins

WALTER REID CULTURAL CENTRE

THURSDAY 9 NOVEMBER AT 6.30PM

A \$15, C \$10

Enchantments

Katherine's Academy of Dance & Theatre Arts presents a captivating dance experience. Our Showcase will include students of all ages from our teeny tinies through to our senior students and includes many fabulous styles of dance and a special enchanting performance to share with you!

PILBEAM THEATRE

SATURDAY 11 NOVEMBER AT 5.30PM

A \$35, P & Y (16 TO 17 YEARS) \$30, Y (3 - 15 YEARS) \$25, F (2A + 2C) \$110, GROUPS OF 20+ HIGH SCHOOL STUDENTS \$25 PER TICKET

Rockhampton Chamber Music Monthly Concert

Music of all genres with vocal and instrumental items. Everyone is welcome. Stay on for afternoon tea with us at a small cost. If you are interested in performing, please come along to rehearsals on Saturday mornings from 9.30am.

WALTER REID CULTURAL CENTRE

SUNDAY 12 NOVEMBER AT 2PM (LEVEL 1, ROOM 5)

GOLD COIN DONATION

Reid's Gallery and Gifts

For a unique and locally made Christmas present, look no further than Reid's Gallery and Gift Shop at the Walter Reid Cultural Centre. Items in the shop have been created by local artists and craftspeople and include hand felted shawls, hand woven scarves, ready to hang traditional artworks, stunning contemporary paintings and cards, hand sewn and embroidered items, photography, jewellery, practical pottery and more.

WALTER REID CULTURAL CENTRE

MONDAY 13 NOVEMBER TO FRIDAY 29 DECEMBER

10AM TO 3PM DAILY

Girls Rock

Rockhampton Girls Grammar School presents Girls Rock. Step right up and be amazed, enchanted, mystified and amused! Some of you will laugh, hopefully no one will cry. With Girls Rock, the Girls Grammar community celebrates girl power with dance, music, drama and comedy. Our talented performers will delight and entertain you.



PILBEAM THEATRE

WEDNESDAY 15 NOVEMBER AT 7PM

ALL TICKETS \$10

The Happy Prince and The Devoted Friend

Rockhampton Little Theatre presents Oscar Wilde's play for juniors The Happy Prince and hosts The Cathedral College students performing The Devoted Friend.



WALTER REID CULTURAL CENTRE

**SATURDAY 18 AND SUNDAY 19
NOVEMBER AT 2PM**

**SATURDAY 25 AND SUNDAY 26
NOVEMBER AT 2PM**

A \$15, P, C \$13, J \$8

Handmade Expo

If it's handmade, home-grown or hand-baked you'll find it here under the one roof! Plenty of stalls, music, workshops, demonstrations, giveaways, entertainment, seating and food.

ROCKHAMPTON SHOWGROUNDS

SATURDAY 18 NOVEMBER

CQ Eat Streets and CQ Mummas Markets

CQ Eat Street is Central Queensland's must visit event! Showcasing a variety of cuisines and beverages, market stalls and activities for the whole family!

CQ Mummas Markets is the place for new and pre-loved products and support services for families.

ROCKHAMPTON SHOWGROUNDS

SATURDAY 18 NOVEMBER FROM 5PM UNTIL 9PM

COST A\$2, 13 AND UNDER FREE

Festival of Russian Ballet

The Imperial Russian Ballet have performed this three-hour ballet extravaganza all around the world, thrilling audiences and impressing critics. This stunning and diverse program consists of an eclectic mix ranging from the magnificent Don Quixote and the dramatic Bolero to highlights from the world's great ballets.



PILBEAM THEATRE

**SATURDAY 18 NOVEMBER AT
7.30PM**

**A \$89, P, S, FoT, RA \$79, Y \$69, F (2A + 2C) \$290,
G8+ \$79 EACH**

Morning Melodies with Vov Dylan

For the first time the Pilbeam Theatre's Morning Melodies presents Vov Dylan, violinist extraordinaire. Vov currently holds the title of World's Fastest Violinist, playing Flight of the Bumblebee in 38.10 seconds.



Vov has performed with the Sydney Symphony Orchestra, the Australian Opera and Ballet Orchestra, and a variety of orchestras and musicians from Europe. Vov will perform a musical journey through more than 100 years of songs from light classics to the standards of the American songbook to musical theatre.

PILBEAM THEATRE

MONDAY 20 NOVEMBER AT 11AM

A\$19.50, FoT, RA \$18.50, P \$17.50, PFoT, RP, G10+P \$16.50, GROUP 10+ \$18 EACH



Debbie's Dance Studio Annual Concert

This annual concert will showcase 300 dance students and cheerleaders in two high energy concerts. The studio has always had the motto of 'putting the fun back in dance' and this will definitely come through as students perform an exciting variety of dance pieces in styles including modern dance, hiphop, contemporary and cheerleading.



There will be two concerts: the junior concert featuring performers aged 3 to 14 years, and the senior concert featuring performers aged 10 years and above.

PILBEAM THEATRE

SATURDAY 25 NOVEMBER AT 10AM - JUNIOR CONCERT

SATURDAY 25 NOVEMBER 2.30PM - SENIOR CONCERT

FOR PRICING DETAILS FOR ONE OR BOTH SHOWS PLEASE GO TO WWW.SEEITLIVE.COM.AU OR CONTACT THE PILBEAM THEATRE ON 4927 4111.

Escape to... Wonderland

Escape to...Wonderland will be an afternoon of magic and fun presented to you by the students of Dance Star Studio.



Act 1 will be a dance musical to 'Alice in Wonderland' with all of your favourite characters. The musical will be exciting and quirky and will have a few surprises!

Act 2 will include a variety of group dances featuring all Dance Star students ranging from 3 years of age to adult. All items have been choreographed for the afternoon's performances and the items will range from jazz, tap, ballet, contemporary, hip hop and musical theatre.

PILBEAM THEATRE

SUNDAY 26 NOVEMBER AT 2PM

A \$30, C & S \$25, Y \$20, F of 4 \$80

Handmade Expo

If it's handmade, home-grown or hand-baked you'll find it here under the one roof! Plenty of stalls, music, workshops, demonstrations, giveaways, entertainment, seating and food.

ROCKHAMPTON SHOWGROUNDS

SATURDAY 2 DECEMBER

A Night in the Spotlight

A dazzling array of performances from the stars at the Capricorn School of Dancing showcasing their versatility and beautiful techniques across all dance styles.

A special feature will be Paquita's Grand Pas Classique, a well-known and loved jewel of the classical ballet repertoire.

PILBEAM THEATRE

SATURDAY 2 DECEMBER AT 6PM

A \$32, P,C, \$26, Y (3 - 17 yrs) \$24, F \$100

Auditions — We Will Rock You

After their spectacular production of *Wicked*, Wayne Scott Kermond and Katie Kermond return to create *We Will Rock You*.

If you would like to be part of it, auditions will be held on Sunday 12 November.

For further information, visit www.seeitlive.com.au/audition or contact the Pilbeam Theatre.



www.facebook.com/pilbeamtheatre

Keep up to date with what is happening at the Pilbeam Theatre, see sneak peeks, previews, behind the scenes video of upcoming events and more at our Facebook page.

The Mayor's Carols by Candlelight

Enjoy your favourite Christmas songs and a visit from Santa at the Mayor's Carols by Candlelight spectacular this December. There are two concerts to enjoy, an inside event at the Pilbeam on Wednesday 6 December and the outdoor spectacular on Saturday 9 December followed by fireworks.

All proceeds go to local charity Anglicare so bring the whole family and get together to celebrate.



PILBEAM THEATRE

WEDNESDAY 6 DECEMBER AT 7PM
A \$12, C, Y & S \$8

ROCKHAMPTON MUSIC BOWL

SATURDAY 9 DECEMBER AT 7PM
GOLD COIN DONATION

Rockhampton Chamber Music Christmas Concert

Music of all genres with vocal and instrumental items. Everyone is welcome and stay on for afternoon tea at a small cost. If you're interested in performing, please come along to rehearsals on Saturday mornings from 9.30am.

WALTER REID CULTURAL CENTRE

SUNDAY 10 DECEMBER AT 2PM (LEVEL 1, ROOM 5)

GOLD COIN DONATION

Annual Kids Day at the Speedway

An annual celebration for kids who love dirt track racing. A huge line up of racing and entertainment, and the return of Rockin Ramp Racing and Christmas edition fireworks!



Kids 12 years and under free admission!

ROCKHAMPTON SHOWGROUNDS

SATURDAY 16 DECEMBER FROM 5PM TO 11PM
A \$25, CHILDREN \$15, F (2x4, 4x4) \$60

Buy tickets 24 hours a day, 7 days a week at
www.seeitlive.com.au.

One Hot Night

One Hot Night is set to become a signature event in Rocky's calendar. BUSBY MAROU has put together a great line up featuring friends and well-respected musicians alike. Off the back of her sold out national Night Thinker tour, Amy Shark will feature in her first ever Rockhampton show, along with Timberwolf, locals Pandamic and of course Busby Marou.

ROCKHAMPTON SHOWGROUNDS

FRIDAY 29 DECEMBER FROM 5.30PM

GENERAL ADMISSION: \$55.10

TICKETS PURCHASED THROUGH OZTIX.COM.AU

The Yanks are back at the Speedway!

USA vs Australia Late Model Invasion. For the first time in decades a USA team hits our shores to take on Australia's best V8 Late Model drivers. A full support program of local stars will turn it on to kick in the New Year.



ROCKHAMPTON SHOWGROUNDS

SATURDAY 6 JANUARY FROM 5PM TO 10PM

A \$25, CHILDREN \$15, F (2x A, 4x C) \$60

Deadly 60 Downunder

After two sell-out Australian tours, Steve Backshall, star of the ABC hit TV show Deadly 60 is returning to Australia with a brand new stage show Deadly 60 Down Under starring Steve, some of Australia's deadliest animals, and YOU.



PILBEAM THEATRE

TUESDAY 9 JANUARY

TWO SESSIONS: 1PM AND 3.30PM

SINGLE ADMISSION \$49, F(2A+2C) \$179,

TWO AND UNDER FREE IF SITTING ON A LAP.

Sports and Health Expo 2018

The annual Sports and Health Expo showcases our Region's sporting clubs, health service providers, gyms, personal trainers and sport retailers all in one location. It aims to encourage increased participation in physical activity, sport, recreation and healthy lifestyles along with healthy eating. The event will feature come and try activities, giveaways and a range of site holders. There is something for everyone at the 2018 Sports and Health Expo.

ROCKHAMPTON SHOWGROUNDS

SUNDAY 4 FEBRUARY FROM 9AM – 1PM

FREE ENTRY

Tin Top Smackdown at the Speedway

Modified sedans Silver Crown headlines, and the boys will tear each other's doors off in their blue ribbon event for the season. It's sure to bring out the big hitters with \$2000 to win! Super Sedans also run on the night with big money up for grabs in the Super Sedan Rocky Cup.



ROCKHAMPTON SHOWGROUNDS

SATURDAY 10 FEBRUARY FROM 5PM TO 10.30PM

A \$25, CHILD \$15, F (2xA, 4xC) \$60

Launch of Rocky Flix 2018: Double Feature

Rocky Flix launches the 2018 Program with the screening of two special films – one old favourite and one new release not yet seen in Rockhampton.

WALTER REID CULTURAL CENTRE

SATURDAY 10 FEBRUARY AT 3PM AND 7PM

A\$15, C \$10 – TICKETS NEEDED FOR EACH SESSION.



www.facebook.com/pilbeamtheatre

Rockhampton Chamber Music Monthly Concert

Music of all genres with vocal and instrumental items. Everyone is welcome to stay on for afternoon tea at a small cost. If you're interested in performing, please come along to rehearsals on Saturday mornings from 9.30am.

WALTER REID CULTURAL CENTRE

SUNDAY 11 FEBRUARY AT 2PM (LEVEL 1, ROOM 5)

GOLD COIN DONATION

Elvis an American Trilogy

Elvis an American Trilogy takes you on a journey through the music of the 'The King'. It's a complete story with three of the world's leading Elvis tribute artists starring in one of the most spectacular live concert productions in the history of entertainment.



PILBEAM THEATRE

FRIDAY 16 FEBRUARY AT 8PM

A \$65, C \$55, CHILD 3-15 YEARS \$40

Rocky Radio: Live on Stage

Rocky Radio: Live on Stage is bringing a night of rollicking radio plays to the Walter Reid Cultural Centre. We'll be performing a mix of works by established playwrights and locally-written plays, live on stage and complete with manual sound effects. There will be comedy and drama, slice-of-life realism and more off-the-wall adventures - and we're looking forward to sharing them with you!



WALTER REID CULTURAL CENTRE

SATURDAY 17 FEBRUARY AT 3PM AND 7PM

GENERAL ADMISSION \$20

Handmade Expo

If it's handmade, home-grown or hand-baked, you'll find it here under the one roof! Plenty of stalls, music, workshops, demonstrations, giveaways, entertainment, seating and food.

ROCKHAMPTON SHOWGROUNDS

SATURDAY 17 FEBRUARY

OUR land people stories

Bangarra brings you three personal and profound dance works, showcasing the infinite stories of Australia's cultural heritage. The stunning paintings of Yirkkala artist Nyapanyapa Yunupingu are brought to life in Nyapanyapa, Wiradjuri family and kinship is explored in Miyagan, and the two sides of Sydney's Governor Macquarie are uncovered in Macq.



Proudly presented by Rockhampton Regional Council as part of the 2018 See it Live Theatre season.

PILBEAM THEATRE

WEDNESDAY 28 FEBRUARY AT 7.30PM

A \$52, UNDER 26 PAY YOUR AGE



We Will Rock You

Rockhampton Regional Council's Production.

Director Wayne Scott Kermond and choreographer Katie Kermond, who brought us the record-breaking seasons of WICKED and Mary Poppins, once again return to head the creative team of the worldwide smash hit We Will Rock You.



The musical takes place in a future age on a planet once called Earth that is now controlled by a mighty corporation. Rock music is unheard and all musical instruments are banned. The hope of breaking free rests with an unlikely resistance - an alliance of rebel Bohemians.

Music and Lyrics by QUEEN. Story and Script by Ben Elton.

PILBEAM THEATRE

FRIDAY 16 MARCH AT 7.30PM

SATURDAY 17 MARCH AT 7.30PM

SUNDAY 18 MARCH AT 3PM

FRIDAY 23 MARCH AT 7.30PM

SATURDAY 24 MARCH AT 7.30PM

A \$52, AFoT \$48, P \$48, CSC \$48, J \$37,

F(2A+2J) \$155, G 10+ \$49, PFoT \$44, RA \$48, RP \$44



Events CALENDAR

NOV 4 - 28	JAN Happy Birthday Play School	RAG
	4 SPECTER	PT
	4 Annual Super Sedan Summer Slam	RSG
	7-9 South Sea Islander Exhibition	WRCC
	7 The Rhythms of Ireland	PT
	9 Rocky Flix: Finding Altamira	WRCC
	11 Enchantments	PT
	12 Rockhampton Chamber Music	WRCC
13 - 29	DEC Reid's Gallery and Gifts	WRCC
	15 Girls Rock	PT
18 - 19	The Happy Prince and The Devoted Friend	WRCC
	18 Handmade Expo	RSG
	18 CQ Eats Streets and Mammamas Markets	RSG
	18 Festival of Russian Ballet	PT
	20 Morning Melodies with Vov Dylan	PT
25 - 26	The Happy Prince and The Devoted Friend	WRCC
	25 Debbie's Dance Studio Annual Concert	PT
	26 Escape to... Wonderland	PT
DEC 2	The Handmade Expo	RSG
	2 A Night in the Spotlight	PT
	6 Mayor's Carols by Candlelight	PT
	9 Mayor's Carols by Candlelight	MB
	10 Rockhampton Chamber Music Christmas Concert	WRCC
	16 Annual Kids Day at the Speedway	RSG
	29 One Hot Night	RSG
JAN 6	The Yanks are back at the Speedway!	RSG
	9 Deadly 60 Downunder	PT
FEB 4	2018 Sports and Health Expo	RSG
	10 Tin Top Smackdown at the Speedway	RSG
	10 Launch of Rocky Flix 2018: Double Feature	WRCC
	11 Rockhampton Chamber Music	WRCC
	16 Elvis an American Trilogy	PT
	17 The Handmade Expo	RSG
	17 Rocky Radio: Live on Stage	WRCC
	28 OUR land people stories	PT

PT = Pilbeam Theatre RSP = Riverside Park
 O = Other Venue RSG = Rockhampton Showgrounds
 HV = Heritage Village MB = Music Bowl
 RAG = Rockhampton Art Gallery

Contact details

Administration Office
 Pilbeam Theatre, 2 Cambridge Street.
 PO Box 1860 Rockhampton 4700.
 Ticketing Ph 4927 4111
 Administration Ph 4924 5600
 Fax 4936 8835

www.seeitlive.com.au

